

TOWN OF THOMPSON

CONSOLIDATION and RATE RE-STRUCTURING OF THE
ANAWANA, HARRIS WOODS, KIAMESHA LAKE AND
LAKEVIEW SEWER DISTRICTS INTO
THE KIAMESHA SEWER DISTRICT

Prepared for:

THE TOWN OF THOMPSON
4052 Route 42
Monticello, New York 12701

Prepared By:



DELAWARE ENGINEERING, D.P.C.
28 Madison Avenue Extension
Albany, New York 12203

January 2021

Table of Contents

1.0	INTRODUCTION	1
1.1	Background	1
1.2	Reasons for Project.....	1
2.0	DESCRIPTION OF EXISTING DISTRICTS.....	2
2.1	Kiamesha Lake Sewer District.....	2
2.2	Kiamesha Lake Wastewater Treatment Plant	2
2.3	Anawana Sewer District.....	2
2.4	Lake View Sewer District	2
2.5	Harris Woods Sewer District.....	3
3.0	PROPOSED DISTRICT AND GENERAL PLAN OF IMPROVEMENTS.....	3
4.0	DISPOSITION OF FACILITIES	3
5.0	PROPOSED DISTRICT OPERATIONS	3
6.0	REGULATORY REVIEW AND APPROVAL REQUIRED PRIOR TO CONSTRUCTION.....	3
7.0	COST OF HOOK UP FEES	4
8.0	DETAILED EXPLANATION OF COSTS.....	4
8.1	Existing Kiamesha Lake Sewer District.....	4
8.2	Existing Anawana Sewer District	5
8.3	Existing Lake View Sewer District.....	5
8.4	Existing Harris Woods Sewer District	5
8.5	Proposed Kiamesha Sewer District	5
9.0	STATEMENT AS TO BENEFIT ASSESSMENT	7

APPENDICES

Appendix A Existing Sewer Districts

Appendix B Proposed Consolidated Sewer District

Appendix C 2020 Schedule of Points

Appendix D List of Parcels for Consolidated Sewer District

Appendix E Sewer District Boundary Description

1.0 INTRODUCTION

This Consolidation has been prepared as required by Article 17-A, Title 2 of the General Municipal Law, Consolidation and Dissolution of Local Government, and is intended to assist Town officials and residents in evaluating the public benefit of consolidation of the existing Anawana, Lake View Estates and Harris Woods Sewer Districts, as well as any extensions thereto, into the Kiamesha Lake Sewer District as these districts already send wastewater to the Kiamesha Wastewater Treatment Plant, thus creating a common cost base.

1.1 Background

The Town of Thompson, Sullivan County, is located in the foothills of New York State's Catskill Mountain region. The Town owns and operates nine sewer districts (SD) in which wastewater is collected via Town-owned sewer lines including gravity and force mains with pump stations, and delivered to one of five Town-owned wastewater treatment plants (WWTPs). In addition, the Town owns and operates an additional two sewer districts wherein the Town collection system infrastructure directs sewage to the Village of Monticello sewer system for treatment and disposal.

One of these nine sewer districts is the Kiamesha Lake Sewer District. The Kiamesha Lake SD serves residents and businesses in the hamlet of Kiamesha Lake which has a full-time population of approximately 1,100 residents. The Kiamesha Lake WWTP is located on a 48.3-acre parcel along Rock Ridge Road, northeast of the NYS Route 17/42 interchange. While there are no large industrial users connected to the system, the WWTP treats wastewater from the Adelaar Resort complex and the Route 42 commercial corridor.

A map identifying the Kiamesha Lake Sewer District boundaries and WWTP site is included in Appendix A. The WWTP also treats wastewater from the Anawana, Lake View and Harris Woods Sewer Districts. Maps of these current sewer districts are included in Appendix A.

A map of the Consolidated Kiamesha Sewer District is included in Appendix B. The Adelaar Sewer District is not included in the consolidation at this time.

1.2 Reasons for Project

The Town's sewer infrastructure is disparate and challenging to manage from both an administrative as well as capital, operations and maintenance perspective. The numerous sewer districts (SDs) were created over the years. At the time of creation, each district had a purpose; however, over time, the function and finances of each of the districts has changed.

In 2019, the Town caused an Infrastructure Master Plan to be prepared, which incorporated technical analysis, review of fiscal conditions, review of districts and rate structure for both sewer and water districts within the Town. A major recommendation resulting from this review is consolidation of the Kiamesha Lake, Anawana, Lake View Estates and Harris Woods Sewer Districts. Planning for sewer operation and maintenance and upgrades within this area as one sewer district will simplify the management of the wastewater collection and treatment

operations. Standardization of sewer rents within a consolidated sewer district sending wastewater to the Kiamesha Lake WWTP will allow an equitable distribution of costs.

2.0 DESCRIPTION OF EXISTING DISTRICTS

2.1 Kiamesha Lake Sewer District

The Kiamesha Lake SD serves the area surrounding and to the east of Kiamesha Lake. The SD serves residents and businesses in the hamlet of Kiamesha Lake which has a full-time population of approximately 1,100 residents. There are approximately 486 service accounts of which 287 (approximately 60%) are single-family dwellings. A total of 364 connections are residential, 88 are vacant and 21 are commercial.

Wastewater is collected via approximately 11.9 miles of sewer collection system piping, seven sanitary sewer pump stations and 219 manholes. This system collects and conveys the sanitary sewage to the Kiamesha Lake WWTP.

2.2 Kiamesha Lake Wastewater Treatment Plant

The Kiamesha WWTP was originally constructed in the 1950s as a trickling filter. The facility was upgraded to an oxidation ditch (activated sludge) in 1986, with additional upgrades occurring in 1992 and 2018.

The WWTP is regulated by the New York State Department of Environmental Conservation (NYSDEC) under the State Pollutant Discharge Elimination System (SPDES) Permit program and operates under SPDES Permit No. NY0030724. The SPDES permit allows the plant to discharge up to 2.0 million gallons per day (MGD), although the plant typically operates at approximately 50% capacity. Outflows from the plant are received by an unnamed tributary of Kiamesha Creek.

In 2017, the SPDES permit was modified to include discharge limits for fecal coliform and chlorine residual. The Town will install ultra-violet (UV) disinfection facilities as part of a planned facility upgrade in order to meet the updated permit limits.

The WWTP has been in operation for 65 years and is approaching the end of its design life expectancy, which is typically 35 to 40 years. Planned upgrades are necessary to meet recently updated permit limits, to improve and expand bio-solids processing capacity, and to ensure the plant's long-term viability.

2.3 Anawana Sewer District

The Anawana Sewer District serves the area south of Kiamesha Lake and north of State Route 17. The SD includes approximately 74 service connections, of which 36 are residential, 25 are commercial, and 11 are vacant.

The collection system consists of 2.5 miles of gravity main, 1.7 miles of force main, 63 manholes, and 2 pump stations. Wastewater is conveyed to the Kiamesha WWTP.

2.4 Lake View Sewer District

The Lake View Sewer District serves the area at the southeast end of Fraser Lake. The area is currently under development, when completed the area will contain 60 single-family homes (SFH). The collection system consists of 0.1 mile of gravity main, 0.3 mile of force main, and 6 manholes, and will convey wastewater to the Kiamesha WWTP.

2.5 Harris Woods Sewer District

This sewer district serves the area west of Old Liberty Road and south of Harris Road. The district includes 98 connections, of which 51 are residential, and 46 are vacant.

The collection system consists of 1.1 miles of force main and 1 pump station, and conveys wastewater to the Kiamesha Lake WWTP.

3.0 PROPOSED DISTRICT AND GENERAL PLAN OF IMPROVEMENTS

The proposed Kiamesha Sewer District is the consolidation of the Anawana, Lake View, Harris Woods and Kiamesha Lake Sewer Districts into a single entity from an administrative and functional perspective. A map of the proposed Kiamesha Sewer District is included in Appendix B. A list of parcels and boundary description are included in Appendix D and Appendix E. These sewer districts all currently send wastewater to the Kiamesha Lake WWTP, no construction within the collection systems is required for consolidation. Consolidation of these SDs would result in the sharing of annual operation and maintenance costs as well as capital costs across a larger number of users.

Upgrades are being planned for the Kiamesha WWTP to meet recently updated permit limits, to improve and expand bio-solids processing capacity, and to ensure the plant's long-term viability.

4.0 DISPOSITION OF FACILITIES

Real property, pipes and appurtenances will remain in the operational authority of the consolidated Kiamesha Sewer District.

5.0 PROPOSED DISTRICT OPERATIONS

The Consolidated district will operate in accordance with applicable law and regulation, including Town Code. The WWTP will continue to operate under its NYSDEC SPDES permit.

6.0 REGULATORY REVIEW AND APPROVAL REQUIRED PRIOR TO CONSTRUCTION

The consolidation of the Kiamesha Lake, Anawana, Harris Woods and Lake View Sewer Districts will include compliance with 6 NYCRR Part 617, the State Environmental Quality Review Act (SEQRA).

No construction will be required for consolidation of these Sewer Districts.

Near future upgrades to the Kiamesha WWTP will be performed in conformance with Regulatory review, and approvals of the engineering report and design documents are anticipated to be conducted by the NYS Department of Environmental Conservation and the NYS Environmental Facilities Corporation.

7.0 COST OF HOOK UP FEES

While the Town of Thompson institutes a hook-up fee for new users, consolidation will not result in the imposition of any hook-up fees for the users presently connected to either of the existing districts.

8.0 DETAILED EXPLANATION OF COSTS

The Sewer Districts that send wastewater to the Kiamesha WWTP include the Kiamesha Lake, Adelaar, Anawana, Harris Woods and Lake View Sewer Districts. These sewer districts currently have their own budgets for operation and maintenance and debt service for their collection systems, and are charged annually a portion of the costs of the Kiamesha WWTP based on their contributed percentage of the total wastewater flow to the WWTP. Those WWTP charges are included in the individual sewer district budgets. Points for rent and debt are determined based on property use as codified in the *§194-46 Schedule of Points* of the Town Code.

Costs to the typical user are calculated based on the total operations and maintenance (O&M) costs plus a unit share of any debt service owed by the sewer district. Only those properties within the district that are connected to the public sewer system are responsible for a share of the O&M costs. However, all properties -- including vacant land not connected to the sewer system -- are and will continue to be charged for a share of the debt service.

The 2020 Schedule of Points (Appendix C) utilizes the previously existing Schedule rate system for residential properties, and vacant properties and is based upon land use type, based on property codes. The updated Schedule adjusts commercial properties and medical facilities to points according to square footage, based on a ratio of expected sewer use according to property type. Points are no longer based on assessed property value, as assessed property value is not correlated to sewer use.

8.1 Existing Kiamesha Lake Sewer District

Single family residences were assigned 7.5 debt points for capital improvements and 7.5 rent points for operations and maintenance costs. In the Adopted 2020 Town of Thompson Budget, users in the Kiamesha Lake Sewer District were charged \$60.20 per point for operations & maintenance of the system. A single-family home is assigned 7.5 points, resulting in an annual O&M charge of \$451.50.

In 2020, property owners in the Kiamesha Lake Sewer District were charged \$8.11 per point for debt service. A single-family home is assigned 7.5 debt points, resulting in an annual debt service charge of \$60.83.

8.2 Existing Anawana Sewer District

Single family residences are assigned 10 debt points for capital improvements and 10 rent points for operations and maintenance costs. The Anawana Sewer District users were charged \$40.33 per point, the typical single-family home paid \$403.3 annually for operation and maintenance. The Anawana Sewer District had no budgeted debt and no debt charges to users.

8.3 Existing Lake View Sewer District

Single family residences are assigned 10 debt points for capital improvements and 10 rent points for operations and maintenance costs. The Lake View Sewer District is not fully developed, according to the Map, Plan and Report, users will be charged \$90.66 per point for operation and maintenance, the annual charge to a single-family home will be \$906.60. Users will be charged \$4.94 per point for debt, the annual charge to a single-family home will be \$49.40.

8.4 Existing Harris Woods Sewer District

Single family residences are assigned 10 debt points for capital improvements and 10 rent points for operations and maintenance costs. The Harris Woods Sewer District users were charged \$52.30 per point, the typical single-family home paid \$523.00 annually. The Harris Woods Sewer District users were charged \$107.70 per point for debt service, the typical single-family home paid \$1077.00 annually.

8.5 Proposed Kiamesha Sewer District

The consolidation of the sewer districts will result in a single budget for a single sewer district within the Town. Costs for daily operation, regular maintenance, repairs and capital improvement in the Kiamesha Sewer District will be shared equitably among all users that benefit from the wastewater service.

Properties will be assigned points for operation and maintenance and debt according to the 2020 Schedule of Points. A copy of the 2020 Schedule of Points is provided in Appendix D.

8.5.1 Debt

The Kiamesha and Harris Woods SDs borrowed total of \$6,298,267 for the purpose of WWTP upgrade construction, line replacement and district extension. The repayment of these bonds will be shared by all users of the Consolidated Kiamesha Sewer District. The existing bond and BAN obligations for the current sewer districts is as follows;

Description	Outstanding Balance	Maturity Year	Years Remaining	Annual Approximate Payment
Kiamesha Trunk Line BAN	\$1,286,267.00	2021	1	\$53,768.98
Kiamesha Plant Constr. BOND	\$1,562,781.00	2030	10	\$147,085.00
Harris Woods District Ext. BOND	\$625,000.000	2031	11	\$69,242.50

8.5.2 Assets

Assets of the existing sewer districts and any associated extensions consist of underground infrastructure including sewer collection piping, manholes and pump stations, as well as the WWTP. These assets will remain part of the consolidated sewer district. The consolidated sewer district will have a total taxable value of approximately \$137,185,000.

8.5.3 Rates

Budgets for operation and maintenance and debt to consolidated sewer district will result in a single budget and rate as follows;

Cost		Assessment
Operation and maintenance	\$43.42	Per Unit Assessment Point
Debt Service	\$10.22	Per Unit Assessment Point

As a comparison, the annual cost to a single-family home in the consolidated Kiamesha Sewer District would be \$536.40.

SFH Annual Cost	Variance from 2020 costs	Former SD
\$536.40	\$24.08	Kiamesha Lake
	\$133.07	Anawana
	-\$1063.61	Harris Woods
	-\$115.00	Lake View

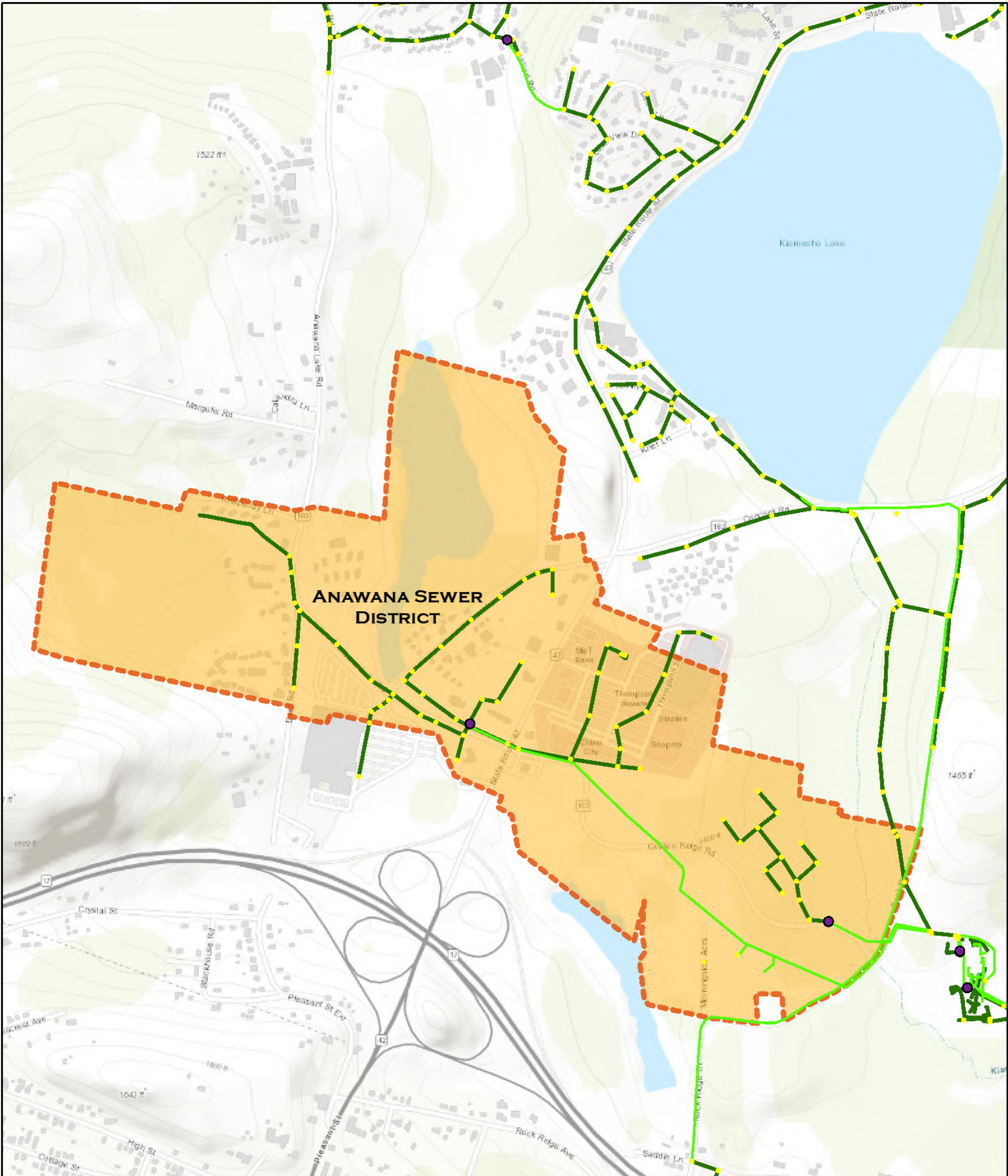
These are estimates based upon the current data available for each property and the previous year's Budget. Operation and maintenance charges and/or debt service charges will adjust as

properties are updated, added, removed or re-developed within the Sewer District and the next annual Budget is adopted.

9.0 STATEMENT AS TO BENEFIT ASSESSMENT

As required by Town Law, the costs associated with debt service of the consolidated district will be charged on a benefit basis; operations and maintenance revenue will be derived from consumption charges as related through land use type.

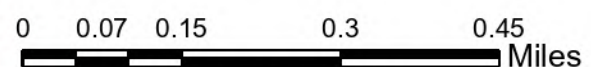
APPENDIX A
Existing Sewer District Maps



ANAWANA SEWER DISTRICT

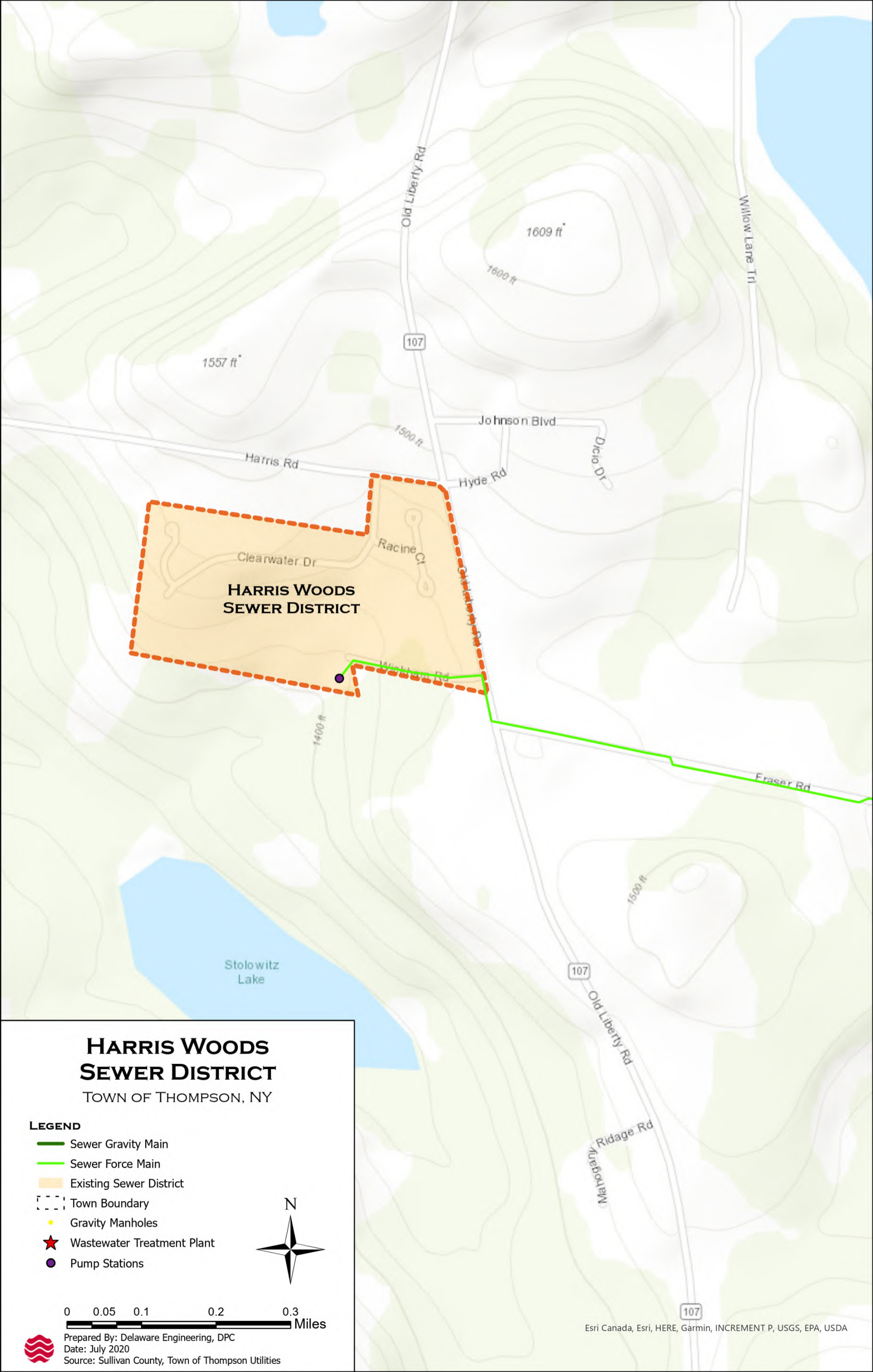
TOWN OF THOMPSON, NY

- LEGEND**
- Sewer Gravity Main
 - Sewer Force Main
 - Existing Sewer District
 - Gravity Manholes
 - Pump Stations
 - Town Boundary



Prepared By: Delaware Engineering, DPC
 Date: July 2020
 Source: Sullivan County, Town of Thompson Utilities

Esri, HERE, Garmin, INCREMENT P, USGS, EPA, USDA



HARRIS WOODS SEWER DISTRICT

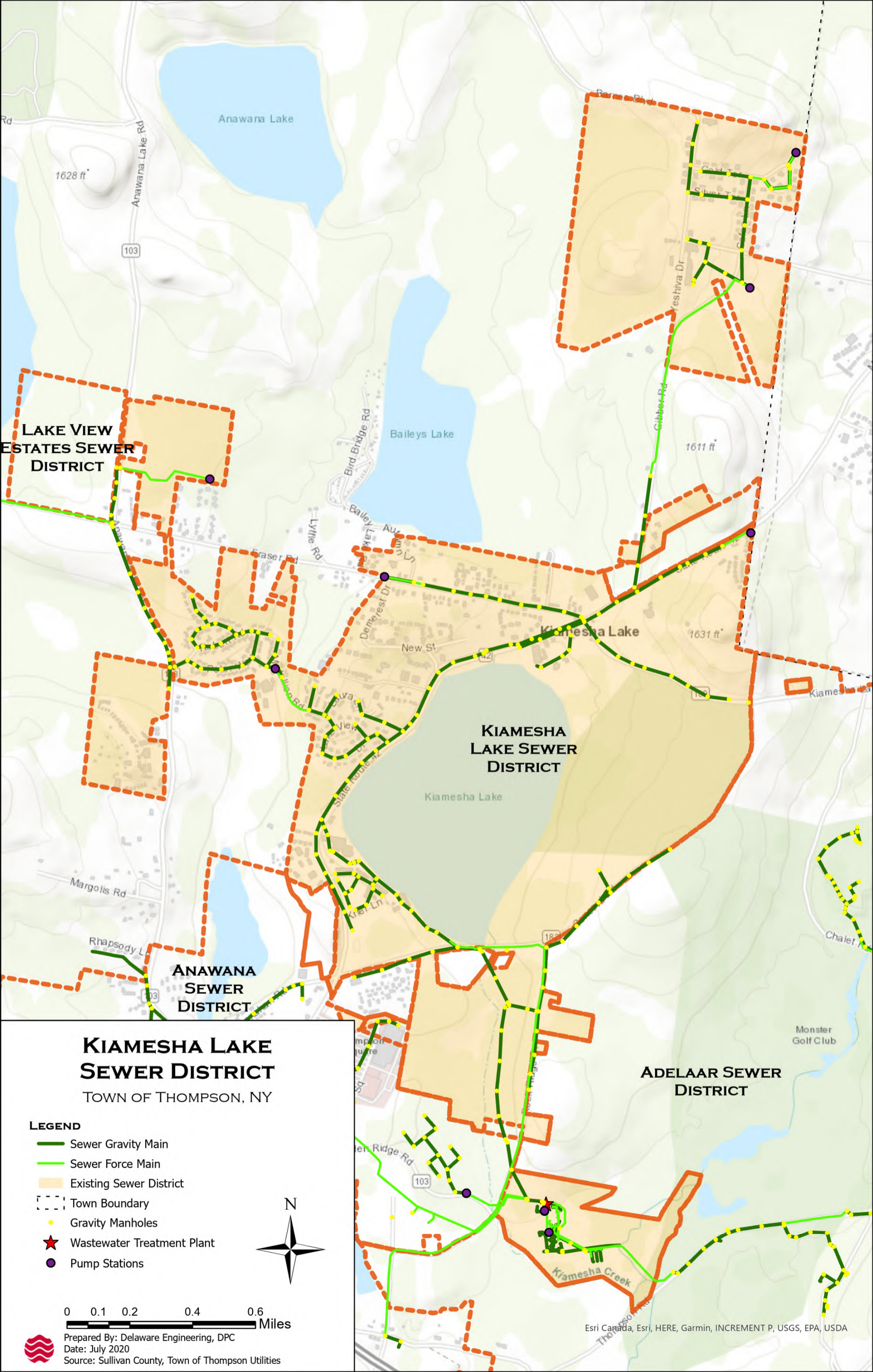
TOWN OF THOMPSON, NY

LEGEND

- Sewer Gravity Main
- Sewer Force Main
- Existing Sewer District
- Town Boundary
- Gravity Manholes
- ★ Wastewater Treatment Plant
- Pump Stations



Prepared By: Delaware Engineering, DPC
 Date: July 2020
 Source: Sullivan County, Town of Thompson Utilities



KIAMESHA LAKE SEWER DISTRICT

TOWN OF THOMPSON, NY

- LEGEND**
- Sewer Gravity Main
 - Sewer Force Main
 - Existing Sewer District
 - Town Boundary
 - Gravity Manholes
 - ★ Wastewater Treatment Plant
 - Pump Stations



0 0.1 0.2 0.4 0.6 Miles



Prepared By: Delaware Engineering, DPC
 Date: July 2020
 Source: Sullivan County, Town of Thompson Utilities

Esri Canada, Esri, HERE, Garmin, INCREMENT P, USGS, EPA, USDA



**LAKE VIEW
ESTATES SEWER
DISTRICT**

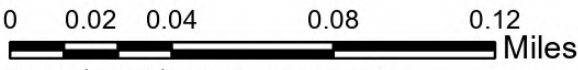
**KIAMESHA
LAKE SEWER
DISTRICT**

**LAKE VIEW ESTATES
SEWER DISTRICT**

TOWN OF THOMPSON, NY

LEGEND

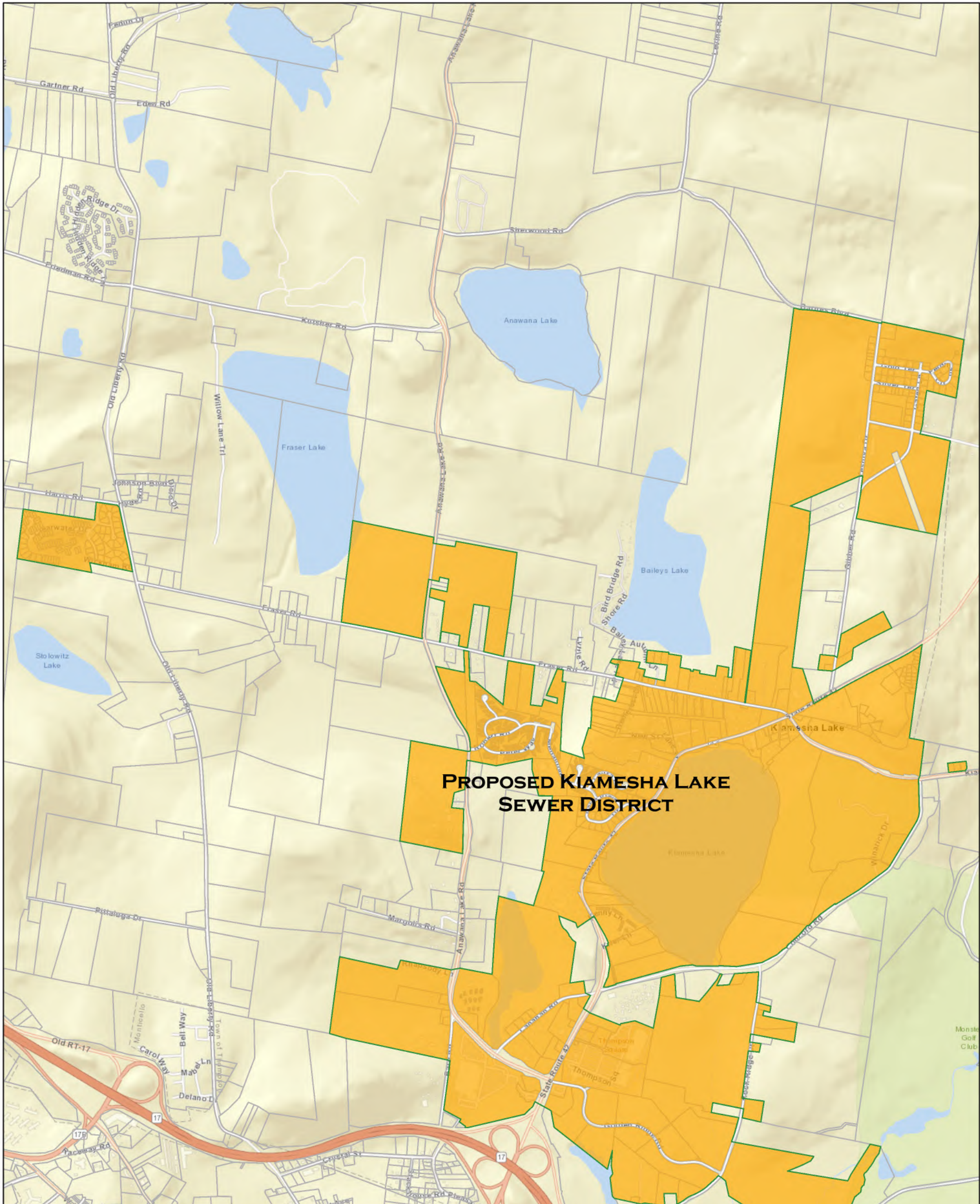
-  Sewer Gravity Main
-  Sewer Force Main
-  Existing Sewer District
-  Town Boundary
-  Gravity Manholes
-  Wastewater Treatment Plant
-  Pump Stations



Prepared By: Delaware Engineering, DPC
 Date: July 2020
 Source: Sullivan County, Town of Thompson Utilities

APPENDIX B




Proposed Consolidated Sewer District Map



PROPOSED KIAMESHA LAKE SEWER DISTRICT

TOWN OF THOMPSON, NY

LEGEND

-  Proposed Kiamesha Lake Outline
-  Kiamesha Lake Proposed District
-  Thompson Tax Parcels



0 0.13 0.25 0.5 0.75 Miles



Prepared By: Delaware Engineering, DPC
 Date: Jan 2021
 Source: Sullivan County, Town of Thompson Utilities

APPENDIX C
2020 Schedule of Points

1/28/2021

2020 Schedule of Points

This Schedule refers to domestic, or sanitary, sewage
 Multi-use properties will be assigned points summed for each use

*=per unit

Property Class	Property Use	Rent Points	Debt Points
210	Single-family dwellings		
	1 to 4 bedrooms	10	10
	5 or more bedrooms	20	20
215, 220	Home with apartment, Two-family dwellings	20	20
230	Three-family dwelling	30	30
260	Seasonal Homes	10	10
280	Residential multistructure, multipurpose*	20	20
411	Apartment*		
	one-bedroom	7	7
	two-bedroom	8	8
	three-bedroom	10	10
Condominiums	Residences with HOA offering plans will be assigned a share of the Points for the related common facilities		
270, 416	Mobile home, manufactured home parks*	5	5
260	Seasonal Residences	10	10
414, 415, 418	Hotels, Motels, Inns		
	Office, first unit, small kitchen each sleeping unit*	20	20
	each efficiency unit*	5	5
		6	5
417	Camps, cottages, bungalows; unheated; per unit*	5	10
	add for day camps and/or school facilities	15	15
421, 424	Restaurants, Night clubs	80	80
422, 423, 425, 426	Diners, Fast Food and bars	40	40
431, 432, 433	Autodealers, Service Stations, Body shops	20	30
434, 435, 436	Car wash	70	70
437,438	Parking lots	0	10
440, 441, 442, 446, 449	Storage, warehouse, distribution facility plus 4 point/1000 sqft	20	20
447	Truck terminal	100	100
451, 452, 453, 454	Large Retail plus 6 points/1000 sqft limited facilities 4 points/1000 sqft	50	50
455, 471, 472	Sales (non-auto), funeral home, kennel	30	30
460, 461, 462, 463	Banks	60	60
464, 465	Office and Professional building	100	100
480, 482, 483	Multi-use commercial, row type, converted residence	15	15
484, 485, 486	Small commercial, mini-marts	30	30
512, 534, 541, 542	Movie theatre, social halls, bowling alleys, ice rinks	90	90
543, 544, 545, 546, 553	Recreational and sport facilities	120	120
550, 552, 682	Recreational acreage without facilities, per acre (ex golf courses, parks, etc)	0	5
554	Outdoor pools, no facilities	20	20
612, 613, 614, 615	Schools, Colleges, Special Institutions (day use) plus 5 point/1000 sqft	20	20
611, 620, 632, 681	Library, Cultural, Religious, Benevolent	20	20
641	Hospitals plus 20 points/1000 sq ft	50	50
614, 633	(Residential) Nursing Home, Group Home, Special Institutions, Assisted Living plus 25 points/1000 sq ft	50	50
642	Small health care office plus 8 points/1000 sq ft	20	20
652	Government Office	100	100
710, 712, 714	Manufacturing and Processing	50	50
720, 721	Mining	10	10
822, 823 853	water supply, water treatment, wastewater treatment according to volume of sewage sent to Town		
300	Vacant, Subdivided lots		
	Each buildable residential lot	0	3
	Each commercial lot	0	4
	Each waterfront lot	0	4
	Acreage per acre	0	5
	SPECIAL CLASSIFICATION: parcels or units included in the district which can not be feasibly served at this time, the property line being more than 200 feet from the sewer line or other circumstances making connection infeasible.	0	0.01
	OUTSIDE USERS shall be assigned points on the same basis and using the same formula used for all parcels within the district, with an additional 10% Administration fee		
	If a user is a MUNICIPAL GOVERNMENT, the Town and such municipal government may by contract agree on the charge to be imposed for use of the sewer system, which such contract may include the successor to such municipal government		

The Town Board will make decisions on questions of classifications of properties

APPENDIX D

List of Parcels for Consolidated Sewer District

ParcelNumb	Suffix	PrintKey	Acreage	Phys_Addre	PROP_CLASS
1		10.-10-1	5.18	State Route 42	417
3		10.-10-3	5.28	State Route 42	314
1		10.-11-1	1.71	State Route 42	260
1		10.-12-1	3.64	4607 State Route 42	417
2		10.-12-2	2.31	State Route 42	330
3		10.-12-3	1.97	4639 State Route 42	312
4		10.-12-4	0.02	State Route 42	311
5		10.-12-5	0.59	State Route 42	474
6		10.-12-6	0.01	Blinn Ave	311
1.1		10.-13-1.1	1.66	4656 State Route 42	449
2.1		10.-13-2.1	1.25	4664 State Route 42	484
2.2		10.-13-2.2	0.21	4668 State Route 42	465
3		10.-13-3	0.33	State Route 42	330
4		10.-13-4	0.39	4670 State Route 42	484
6		10.-13-6	0.33	State Route 42	330
8		10.-13-8	0.02	State Route 42	853
5		10.-1-5	2.33	335 Fraser Rd	417
1		10.-15-1	0.35	4342 State Route 42	421
2		10.-15-2	0.04	4674 State Route 42	210
3		10.-15-3	0.30	State Route 42	439
4		10.-15-4	0.19	State Route 42	311
5.1		10.-15-5.1	0.67	8 Kiamesha Lake Rd	330
5.2		10.-15-5.2	0.03	Anawana Lake Rd	311
6.1		10.-15-6.1	0.47	State Route 42	311
6.2		10.-15-6.2	0.24	State Route 42	311
7.1		10.-15-7.1	2.20	State Route 42	822
8		10.-15-8	0.13	4666 State Route 42	822
6.1		10.-1-6.1	0.31	Fraser Rd	210
6.2		10.-1-6.2	0.22	Fraser Rd	311
6.3		10.-1-6.3	0.10	Fraser Rd	311
1.1		10.-16-1.1	1.18	Kiamesha Lake Rd	331
1.2		10.-16-1.2	0.24	State Route 42	330
1		10.-2-1	0.21	341 Fraser Rd	260
2		10.-2-2	0.26	345 Fraser Rd	210
3		10.-2-3	0.00	Fraser Rd	311
1		10.-3-1	0.57	22 Autumn Ln	210
3		10.-3-3	0.54	14 Autumn Ln	210
4		10.-3-4	0.52	12 Autumn Ln	210
5		10.-3-5	0.31	357 Fraser Rd	210
6		10.-3-6	2.62	363 Fraser Rd	210
1		10.-4-1	1.44	Fraser Rd	311
2		10.-4-2	5.05	381 Fraser Rd	417
3		10.-5-3	0.52	385-387 Fraser Rd	280
4.1		10.-5-4.1	2.75	389-397 Fraser Rd	280
4.3		10.-5-4.3	0.95	391 Fraser Rd	210
5		10.-5-5	1.94	Fraser Rd	314

ParcelNumb	Suffix	PrintKey	Acreage	Phys_Addre	PROP_CLASS
1		10.-6-1	0.11	398 Fraser Rd	612
2.1		10.-6-2.1	1.31	State Route 42	312
2.2		10.-6-2.2	5.55	State Route 42	260
3		10.-6-3	0.19	428 Fraser Rd	418
1.1		10.-7-1.1	1.05	Fraser Rd	314
1.2		10.-7-1.2	1.07	Fraser Rd	314
1		10.-8-1	1.14	Blinn Ave	314
10		10.-8-10	0.79	378 & 380 Fraser Rd	280
2		10.-8-2	0.36	368 Fraser Rd	210
3		10.-8-3	0.77	342 Fraser Rd	210
4		10.-8-4	0.84	344 Fraser Rd	210
5		10.-8-5	0.79	346 Fraser Rd	210
6		10.-8-6	0.97	350 Fraser Rd	417
7.1		10.-8-7.1	0.78	352 Fraser Rd	210
7.2		10.-8-7.2	0.14	354 Fraser Rd	260
7.3		10.-8-7.3	0.38	356 Fraser Rd	260
8.1		10.-8-8.1	0.04	Blinn Ave	311
8.2		10.-8-8.2	0.52	368 Fraser Rd	280
8.3		10.-8-8.3	0.74	358 Fraser Rd	280
9		10.-8-9	0.90	370 Fraser Rd	230
10		10.-9-10	1.14	High St	314
11		10.-9-11	0.60	32 Demerest Dr	260
12		10.-9-12	0.72	High St	311
13		10.-9-13	0.13	Fraser Rd	311
4		10.-9-4	0.35	334-336 Fraser Rd	280
5		10.-9-5	0.73	4 Demerest Dr	210
6		10.-9-6	0.79	16 Demerest Dr	260
7		10.-9-7	1.36	18 Demerest Dr	210
8		10.-9-8	1.31	24 Demerest Dr	210
9		10.-9-9	1.17	28 Demerest Dr	210
15		13.-1-15.1	23.79	9-29 Anawana Lake Rd	280
16.1		13.-1-16.1	4.42	85 Anawana Lake Rd	417
16.2		13.-1-16.2	0.50	85 Anawana Lake Rd	210
17.1		13.-1-17.1	32.12	14 Bard Rd	417
17.2		13.-1-17.2	0.50	Anawana Lake Rd	312
17.3		13.-1-17.3	0.35	4 Bard Rd	260
18.1		13.-1-18.1	1.37	Anawana Lake Rd	314
19	1002	13.-1-19	10.75		210
19	0601	13.-1-19	10.75		210
19	0702	13.-1-19	10.75		210
19	0801	13.-1-19	10.75		210
19	0903	13.-1-19	10.75		210
19	0101	13.-1-19	10.75		210
19	0201	13.-1-19	10.75		210
19	0301	13.-1-19	10.75		210
19	0404	13.-1-19	10.75		210

ParcelNumb	Suffix	PrintKey	Acreege	Phys_Addre	PROP_CLASS
19	0504	13.-1-19	10.75		210
19		13.-1-19	10.75		210
19	0102	13.-1-19	10.75		210
19	0202	13.-1-19	10.75		210
19	0602	13.-1-19	10.75		210
19	0701	13.-1-19	10.75		210
19	0802	13.-1-19	10.75		210
19	0901	13.-1-19	10.75		210
19	0302	13.-1-19	10.75		210
19	0401	13.-1-19	10.75		210
19	0501	13.-1-19	10.75		210
19	0902	13.-1-19	10.75		210
19	0403	13.-1-19	10.75		210
19	0503	13.-1-19	10.75		210
19	0402	13.-1-19	10.75		210
19	0502	13.-1-19	10.75		210
19	1202	13.-1-19	10.75		210
19	1101	13.-1-19	10.75		210
19	1001	13.-1-19	10.75		210
19	1201	13.-1-19	10.75		210
19	1102	13.-1-19	10.75		210
27		13.-1-27	13.76	4493 State Route 42	417
29		13.-1-29	1.91	18 Lanahan Rd	872
30.2		13.-1-30.2	50.09	Anawana Lake Rd	322
31.1		13.-1-31.1	0.34	44 Lanahan Rd	210
31.2		13.-1-31.2	0.42	48 Lanahan Rd	210
32		13.-1-32	0.52	54 Lanahan Rd	280
33		13.-1-33	0.64	Lanahan Rd	417
34.1		13.-1-34.1	32.12	41 Anawana Lake Rd	453
34.3		13.-1-34.3	1.16	4349 State Route 42	426
1.1		13.-2-1.1	0.22	4457 State Route 42	422
1.2		13.-2-1.2	1.48	4459 State Route 42	426
1.3		13.-2-1.3	0.56	4461 State Route 42	432
2.1		13.-2-2.1	1.39	4379 State Route 42	426
2.2		13.-2-2.2	3.27	4445 State Route 42	330
2.3		13.-2-2.3	5.37	59 Lanahan Rd	331
3.3		13.-2-3.3	1.49	4375 State Route 42	486
3.4		13.-2-3.4	3.92	18 Anawana Lake Rd	460
4		13.-2-4	0.46	4437 State Route 42	484
5.1		13.-2-5.1	1.37	4353 State Route 42	462
1.1		13.-3-1.1	1.83	State Route 42	330
10.1		13.-3-10.1	63.33	Concord Rd	322
11		13.-3-11	0.44	212 Rock Ridge Dr	210
13		13.-3-13	2.45	Rock Ridge Dr	314
14		13.-3-14	2.52	Rock Ridge Dr	260
15		13.-3-15	0.20	Rock Ridge Dr	311

ParcelNumb	Suffix	PrintKey	Acreage	Phys_Addre	PROP_CLASS
16		13.-3-16	0.47	Rock Ridge Dr	210
21		13.-3-21	2.31	174 Rock Ridge Dr	260
24		13.-3-24	52.58	Rock Ridge Dr	853
37.1		13.-3-37.1	1.79	101 Rock Ridge Dr	210
37.11		13.-3-37.11	0.04	Rock Ridge Dr	853
37.3		13.-3-37.3	0.30	65 Rock Ridge Dr	210
37.4		13.-3-37.4	13.17	71 Rock Ridge Dr	417
37.5		13.-3-37.5	11.86	State Route 42	330
37.6		13.-3-37.6	2.99	89 Rock Ridge Dr	472
37.7		13.-3-37.7	9.31	7 & 9 Isabel Ln	411
37.8		13.-3-37.8	13.02	6 & 8 Isabel Ln	411
37.9		13.-3-37.9	13.63	Rock Ridge Dr	411
38.1		13.-3-38.1	6.24	29 Golden Ridge Rd	330
38.1		13.-3-38.10	6.47	State Route 42	330
38.3		13.-3-38.3	1.02	4360 State Route 42	426
38.5		13.-3-38.5	2.89	State Route 42	314
38.9		13.-3-38.9	5.72	State Route 42	330
39		13.-3-39	0.62	4370 State Route 42	486
4		13.-3-4	1.87	42 Concord Rd	330
40.1		13.-3-40.1	9.64	68 Thompson Sq	453
40.21		13.-3-40.21	0.72	4450 State Route 42	426
40.22		13.-3-40.22	0.97	4446 State Route 42	462
40.23		13.-3-40.23	1.71	4052 State Route 42	652
40.3		13.-3-40.3	0.09	4438 State Route 42	462
40.6		13.-3-40.6	17.73	4386 State Route 42	451
8		13.-3-8	0.81	Concord Rd	330
6		15.-1-6	0.33	119 Kiamesha Lake Rd	210
7		15.-1-7	0.35	121 Kiamesha Lake Rd	210
8		15.-1-8	0.33	125 Kiamesha Lake Rd	210
11.7		6.-1-11.7	136.79	167-168 Gibber Rd	612
1.1		6.A-1-1.1	13.28	Gibber Rd	314
1.3		6.A-1-1.3	0.30	178 Barnes Blvd	220
1.4		6.A-1-1.4	0.30	182 Barnes Blvd	220
1.5		6.A-1-1.5	0.15	186 A Barnes Blvd	210
1.6		6.A-1-1.6	0.14	Barnes Blvd	311
1.7		6.A-1-1.7	0.15	186 B Barnes Blvd	210
10		6.A-1-10	0.46	22 Feldman Cir	210
11		6.A-1-11	0.56	8 Feldman Cir	220
12		6.A-1-12	0.37	14 Feldman Cir	220
13		6.A-1-13	0.35	16 Feldman Cir	220
14		6.A-1-14	0.78	18 Feldman Cir	220
15		6.A-1-15	0.33	Barnes Blvd	311
16		6.A-1-16	0.28	3 Gold Ter	220
17		6.A-1-17	0.28	9 Gold Ter	220
18		6.A-1-18	0.29	13 Gold Ter	220
19		6.A-1-19	0.49	19 Gold Ter	220

ParcelNumb	Suffix	PrintKey	Acreage	Phys_Addre	PROP_CLASS
2		6.A-1-2	1.40	169 Barnes Blvd	620
20		6.A-1-20	0.28	21 Gold Ter	220
21		6.A-1-21	0.28	Gafen Ln	311
22.1		6.A-1-22.1	0.00		311
22.2		6.A-1-22.2	0.00		311
23		6.A-1-23	0.28	190 Barnes Blvd	220
24		6.A-1-24	0.28	210 Barnes Blvd	220
25		6.A-1-25	0.33	214 Barnes Blvd	210
26		6.A-1-26	0.28	4 Gold Ter	220
27		6.A-1-27	0.28	Gold Ter	311
28		6.A-1-28	0.29	14 Gold Ter	220
29		6.A-1-29	0.49	18 Gold Ter	220
3		6.A-1-3	0.07	Feldman Cir	311
30		6.A-1-30	0.28	22 Gold Ter	220
31.1		6.A-1-31.1	0.14	37 Gafen Ln	210
31.2		6.A-1-31.2	0.14	35 Gafen Ln	210
32		6.A-1-32	0.32	4 Feldman Cir	220
33		6.A-1-33	0.28	211 Barnes Blvd	210
34		6.A-1-34	0.28	7 Silver Ter	220
35		6.A-1-35	0.29	Silver Ter	311
36		6.A-1-36	0.49	15 Silver Ter	220
37		6.A-1-37	0.28	23 Silver Ter	220
38		6.A-1-38	0.28	25 Silver Ter	220
39		6.A-1-39	0.29	32 Gafen Ln	220
4		6.A-1-4	0.47	4 Feldman Cir	311
40		6.A-1-40	0.29	26 Gafen Ln	210
41		6.A-1-41	0.28	4 Silver Ter	220
42		6.A-1-42	0.28	10 Silver Ter	210
43		6.A-1-43	0.29	12 Silver Ter	220
44.1		6.A-1-44.1	0.15	Silver Ter	220
44.2		6.A-1-44.2	0.15	Silver Ter	220
44.3		6.A-1-44.3	0.19	Silver Ter	220
45		6.A-1-45	0.27	20 Silver Ter	210
46.1		6.A-1-46.1	0.13	21 Gafen Ln	210
46.2		6.A-1-46.2	0.14	19 Gafen Ln	210
47		6.A-1-47	0.28	20 Gafen Ln	220
48		6.A-1-48	2.55	Barnes Blvd	314
49		6.A-1-49	0.28	17 Gafen Ln	210
5.1		6.A-1-5.1	0.14	37 Feldman Cir	210
5.2		6.A-1-5.2	0.14	9 Feldman Cir	210
50		6.A-1-50	0.28	16 Gafen Ln	220
51		6.A-1-51	0.28	15 Gafen Ln	220
52		6.A-1-52	0.28	14 Gafen Ln	210
53		6.A-1-53	0.28	11 Gafen Ln	210
54		6.A-1-54	0.29	10 Gafen Ln	210
55		6.A-1-55	0.28	7 Gafen Ln	220

ParcelNumb	Suffix	PrintKey	Acreage	Phys_Addre	PROP_CLASS
56		6.A-1-56	0.32	Gafen Ln	311
57		6.A-1-57	0.29	1 Gafen Ln	220
58		6.A-1-58	0.32	Gibber Rd	311
6		6.A-1-6	0.46	33 Feldman Cir	220
7		6.A-1-7	0.40	21 Feldman Cir	220
8		6.A-1-8	0.29	30 Feldman Cir	210
9		6.A-1-9	0.28	24 Feldman Cir	220
31.1		8.-1-31.1	49.84	329 Anawana Lake Rd	417
41		8.-1-41	35.25	203 Anawana Lake Rd	417
1		8.A-1-1	0.25	23 Racine Ct	210
10		8.A-1-10	0.28	14 Racine Ct	210
11		8.A-1-11	0.27	12 Racine Ct	210
12		8.A-1-12	0.25	11 Racine Ct	210
13		8.A-1-13	0.28	13 Racine Ct	210
14		8.A-1-14	0.30	15 Racine Ct	210
15		8.A-1-15	0.24	10 Racine Ct	210
16		8.A-1-16	0.25	8 Racine Ct	210
17		8.A-1-17	0.26	6 Racine Ct	210
18		8.A-1-18	0.24	Meadowbrook Dr	311
19		8.A-1-19	0.27	Meadowbrook Dr	311
2		8.A-1-2	0.29	25 Racine Ct	210
20		8.A-1-20	0.26	Meadowbrook Dr	311
21		8.A-1-21	0.30	Meadowbrook Dr	311
22		8.A-1-22	0.23	Meadowbrook Dr	311
23		8.A-1-23	0.22	Meadowbrook Dr	311
24		8.A-1-24	0.20	Wickham Dr	311
25		8.A-1-25	0.28	Wickham Dr	311
26		8.A-1-26	0.25	Wickham Dr	311
27		8.A-1-27	0.26	7 Wickham Dr	210
28		8.A-1-28	0.24	Wickham Dr	311
29		8.A-1-29	0.23	Wickham Dr	311
3		8.A-1-3	0.26	27 Racine Ct	210
30		8.A-1-30	0.26	Wickham Dr	311
31		8.A-1-31	0.09	16 Clearwater Dr	210
32		8.A-1-32	0.08	18 Clearwater Dr	210
33		8.A-1-33	0.09	20 Clearwater Dr	210
34		8.A-1-34	0.09	22 Clearwater Dr	210
35		8.A-1-35	0.09	24 Clearwater Dr	210
36		8.A-1-36	0.09	26 Clearwater Dr	210
37		8.A-1-37	0.09	17 Clearwater Dr	210
38		8.A-1-38	0.09	19 Clearwater Dr	210
39		8.A-1-39	0.09	21 Clearwater Dr	210
4		8.A-1-4	0.22	28 Racine Ct	210
40		8.A-1-40	0.10	23 Clearwater Dr	210
41		8.A-1-41	0.09	Clearwater Dr	311
42		8.A-1-42	0.09	Clearwater Dr	311

ParcelNumb	Suffix	PrintKey	Acreage	Phys_Addre	PROP_CLASS
43		8.A-1-43	0.09	Clearwater Dr	311
44		8.A-1-44	0.09	Clearwater Dr	311
45		8.A-1-45	0.09	Clearwater Dr	311
46		8.A-1-46	0.09	Clearwater Dr	311
47		8.A-1-47	0.09	Clearwater Dr	311
48		8.A-1-48	0.09	Clearwater Dr	311
49		8.A-1-49	0.09	Clearwater Dr	311
5		8.A-1-5	0.25	26 Racine Ct	210
50		8.A-1-50	0.09	Clearwater Pl	311
51		8.A-1-51	0.10	Clearwater Pl	311
52		8.A-1-52	0.09	Clearwater Pl	311
53		8.A-1-53	0.09	Clearwater Pl	311
54		8.A-1-54	0.09	Clearwater Pl	311
55		8.A-1-55	0.10	Clearwater Pl	311
56		8.A-1-56	0.09	Clearwater Pl	311
57		8.A-1-57	0.10	Clearwater Pl	311
58		8.A-1-58	0.09	Clearwater Pl	311
59		8.A-1-59	0.09	Clearwater Pl	311
6		8.A-1-6	0.25	24 Racine Ct	210
60		8.A-1-60	0.09	Clearwater Pl	311
61		8.A-1-61	0.12	Clearwater Dr	311
62		8.A-1-62	0.12	Clearwater Dr	311
63		8.A-1-63	0.12	Clearwater Dr	311
64		8.A-1-64	0.12	Clearwater Dr	311
65		8.A-1-65	0.12	Clearwater Dr	311
66		8.A-1-66	0.12	Clearwater Dr	311
67		8.A-1-67	0.23	Clearwater Dr	311
68		8.A-1-68	0.22	Clearwater Dr	311
69		8.A-1-69	0.26	Clearwater Dr	311
7		8.A-1-7	0.21	22 Racine Ct	210
70		8.A-1-70	0.27	Clearwater Dr	311
71		8.A-1-71	0.23	Clearwater Dr	311
72		8.A-1-72	0.21	Clearwater Dr	311
73		8.A-1-73	0.23	1 Summit Pl	210
74		8.A-1-74	0.09	55 Clearwater Dr	210
75		8.A-1-75	0.10	53 Clearwater Dr	210
76		8.A-1-76	0.09	51 Clearwater Dr	311
77		8.A-1-77	0.09	49 Clearwater Dr	311
78.1		8.A-1-78.1	0.09	47 Clearwater Dr	210
79		8.A-1-79	0.10	45 Clearwater Dr	210
8		8.A-1-8	0.29	18 Racine Ct	210
80		8.A-1-80	0.09	43 Clearwater Dr	210
81		8.A-1-81	0.09	41 Clearwater Dr	210
82		8.A-1-82	0.08	3 Summit Pl	210
83		8.A-1-83	0.10	5 Summit Pl	210
84		8.A-1-84	0.08	7 Summit Pl	210

ParcelNumb	Suffix	PrintKey	Acreage	Phys_Addre	PROP_CLASS
85		8.A-1-85	0.09	9 Summit Pl	210
86		8.A-1-86	0.08	52 Clearwater Dr	210
87		8.A-1-87	0.10	50 Clearwater Dr	210
88		8.A-1-88	0.09	48 Clearwater Dr	210
89		8.A-1-89	0.10	46 Clearwater Dr	210
9		8.A-1-9	0.22	16 Racine Ct	210
90		8.A-1-90	0.09	44 Clearwater Dr	210
91		8.A-1-91	0.10	42 Clearwater Dr	210
92		8.A-1-92	0.09	6 Summit Pl	210
93		8.A-1-93	0.09	8 Summit Pl	210
94		8.A-1-94	0.10	10 Summit Pl	210
95		8.A-1-95	0.09	12 Summit Pl	210
96		8.A-1-96	0.09	13 Summit Pl	210
97		8.A-1-97	0.09	11 Summit Pl	210
98		8.A-1-98	19.47	38 Clearwater Dr	545
10		9.-1-10	1.45	423 Fraser Rd	280
11		9.-1-11	4.56	4685 State Route 42	541
12.2		9.-1-12.2	0.30	Gibber Rd	311
12.4		9.-1-12.4	1.02	Gibber Rd	314
16		9.-1-16	6.09	24 & 32 Gibber Rd	280
18.3		9.-1-18.3	0.91	18 Gibber Rd	210
21		9.-1-21	7.45	4718 State Route 42	612
22		9.-1-22	0.09	Kiamesha Lk Rd	311
23		9.-1-23	0.12	Kiamesha Lk Rd	311
27.2		9.-1-27.2	0.20	Kiamesha Lk Rd	311
27.3		9.-1-27.3	0.83	Kiamesha Lake Rd	311
34.1		9.-1-34.1	17.99	219 Concord Rd	330
34.2		9.-1-34.2	2.57	Concord Rd	330
34.4		9.-1-34.4	50.46	Concord Rd	330
34.5		9.-1-34.5	55.10	Concord Rd	331
34.6		9.-1-34.6	11.88	Concord Rd	330
34.7		9.-1-34.7	0.06	Concord Rd	311
36		9.-1-36	18.79	Concord Rd	322
38		9.-1-38	7.32	Concord Rd	330
39.1		9.-1-39.1	5.74	State Route 42	330
40.2		9.-1-40.2	2.77	4496 State Route 42	210
41		9.-1-41	2.10	4496 State Route 42	446
42		9.-1-42	1.47	State Route 42	411
43.1		9.-1-43.1	13.43	State Route 42	330
45.2		9.-1-45.2	4.14	State Route 42	314
51.1		9.-1-51.1	10.24	4599 State Route 42	417
51.2		9.-1-51.2	9.84	4599 State Route 42	417
56		9.-1-56	4.54	Fraser Rd	314
57		9.-1-57	3.94	Fraser Rd	314
58.1		9.-1-58.1	3.73	Fraser Rd	311
58.2		9.-1-58.2	7.32	Medallion Rd	314

ParcelNumb	Suffix	PrintKey	Acreage	Phys_Addre	PROP_CLASS
62.1		9.-1-62.1	5.85	Anawana Lake Rd	314
		9.-1-64	5.71	231 Fraser Rd	417
67		9.-1-67	33.35	372 Anawana Lake Rd	417
75		9.-1-75	2.24	State Route 42	822
76		9.-1-76	0.01	Concord Rd	330
77		9.-1-77	0.67	Concord Rd	331
79		9.-1-79	0.27	Kiamesha Lk Rd	311
8.1		9.-1-8.1	0.68	403 Fraser Rd	411
8.2		9.-1-8.2	38.98	Fraser Rd	322
8.3		9.-1-8.3	9.73	407 Fraser Rd	280
80		9.-1-80	7.78	State Route 42	312
80	0302	9.-1-80	7.78	State Route 42	312
80	0201	9.-1-80	7.78	State Route 42	312
80	0103	9.-1-80	7.78	State Route 42	312
80	0408	9.-1-80	7.78	State Route 42	312
80	0506	9.-1-80	7.78	State Route 42	312
80	0301	9.-1-80	7.78	State Route 42	312
80	0106	9.-1-80	7.78	State Route 42	312
80	0101	9.-1-80	7.78	State Route 42	312
80	0108	9.-1-80	7.78	State Route 42	312
80	0107	9.-1-80	7.78	State Route 42	312
80	0105	9.-1-80	7.78	State Route 42	312
80	0102	9.-1-80	7.78	State Route 42	312
80	0104	9.-1-80	7.78	State Route 42	312
80	0207	9.-1-80	7.78	State Route 42	312
80	0204	9.-1-80	7.78	State Route 42	312
80	0205	9.-1-80	7.78	State Route 42	312
80	0203	9.-1-80	7.78	State Route 42	312
80	0202	9.-1-80	7.78	State Route 42	312
80	0206	9.-1-80	7.78	State Route 42	312
80	0507	9.-1-80	7.78	State Route 42	312
80	0502	9.-1-80	7.78	State Route 42	312
80	0505	9.-1-80	7.78	State Route 42	312
80	0503	9.-1-80	7.78	State Route 42	312
80	0509	9.-1-80	7.78	State Route 42	312
80	0501	9.-1-80	7.78	State Route 42	312
80	0504	9.-1-80	7.78	State Route 42	312
80	0508	9.-1-80	7.78	State Route 42	312
80	0406	9.-1-80	7.78	State Route 42	312
80	0407	9.-1-80	7.78	State Route 42	312
80	0401	9.-1-80	7.78	State Route 42	312
80	0402	9.-1-80	7.78	State Route 42	312
80	0405	9.-1-80	7.78	State Route 42	312
80	0404	9.-1-80	7.78	State Route 42	312
80	0403	9.-1-80	7.78	State Route 42	312
81		9.-1-81	148.07	State Route 42	822

ParcelNumb	Suffix	PrintKey	Acreage	Phys_Addre	PROP_CLASS
83		9.-1-83	0.29	State Route 42	330
84		9.-1-84	0.17	State Route 42	330
85		9.-1-85	5.25	Anawana Lake Rd	314
86		9.-1-86	0.35	Anawana Lake Rd	311
10		9.A-1-10	0.27	4 Lake View Dr	210
11		9.A-1-11	0.48	Lake View Dr	311
3		9.A-1-3	0.35	6 Medallion Rd	210
4		9.A-1-4	0.39	57 Lake View Dr	210
5		9.A-1-5	0.33	59 Lake View Dr	210
6		9.A-1-6	0.31	63 Lake View Dr	210
7		9.A-1-7	0.72	65 Lake View Dr	210
9		9.A-1-9	0.30	6 Lake View Dr	220
1		9.A-2-1	0.31	38 Lake View Dr	210
2		9.A-2-2	0.30	50 Lake View Dr	210
3		9.A-2-3	0.33	52 Lake View Dr	210
4		9.A-2-4	0.34	56 Lake View Dr	210
5		9.A-2-5	0.33	58 Lake View Dr	210
6		9.A-2-6	0.34	14 Lake View Dr	210
7		9.A-2-7	0.35	16 Lake View Dr	210
8		9.A-2-8	0.34	22 Lake View Dr	210
9		9.A-2-9	0.32	30 Lake View Dr	210
1		9.A-3-1	0.64	7 Lake View Dr	210
10		9.A-3-10	0.43	41 Lake View Dr	210
11		9.A-3-11	0.31	45 Lake View Dr	210
12		9.A-3-12	0.29	47 Lake View Dr	210
13		9.A-3-13	0.37	49 Lake View Dr	210
15		9.A-3-15	0.36	1 Medallion Rd	210
3		9.A-3-3	0.31	17 Lake View Dr	210
4		9.A-3-4	0.32	19 Lake View Dr	210
5		9.A-3-5	0.41	23 Lake View Dr	210
6		9.A-3-6	0.43	27 Lake View Dr	210
7		9.A-3-7	0.31	31 Lake View Dr	210
8		9.A-3-8	0.25	35 Lake View Dr	210
9		9.A-3-9	0.34	39 Lake View Dr	210
10		9.B-1-10	0.05	17 Medallion Rd	210
11		9.B-1-11	0.05	4 James Pl	210
12		9.B-1-12	0.06	3 James Pl	210
13		9.B-1-13	0.05	6 James Pl	210
14		9.B-1-14	0.05	2 James Pl	210
15		9.B-1-15	0.05	1 James Pl	210
16		9.B-1-16	0.05	12 Laura Ln	210
17		9.B-1-17	0.06	5 James Pl	210
18		9.B-1-18	0.05	13 Medallion Rd	210
19		9.B-1-19	0.05	11 Laura Ln	210
2		9.B-1-2	4.59	Laura Ln	311
20		9.B-1-20	0.05	8 James Pl	210

ParcelNumb	Suffix	PrintKey	Acreage	Phys_Addre	PROP_CLASS
21		9.B-1-21	0.06	9 James Pl	210
22		9.B-1-22	0.05	11 James Pl	210
23		9.B-1-23	0.06	13 James Pl	210
24		9.B-1-24	0.05	8 Laura Ln	210
25		9.B-1-25	0.06	17 James Pl	210
26		9.B-1-26	0.05	12 James Pl	210
27		9.B-1-27	0.05	14 James Pl	210
28		9.B-1-28	0.05	13 Laura Ln	210
29		9.B-1-29	0.05	15 Medallion Rd	210
3		9.B-1-3	0.21	State Route 42	311
30		9.B-1-30	0.06	22 James Pl	210
31		9.B-1-31	0.05	15 James Pl	210
32		9.B-1-32	0.05	11 Medallion Rd	210
33		9.B-1-33	0.06	3 Laura Ln	210
34		9.B-1-34	0.05	33 Laura Ln	210
35		9.B-1-35	0.05	26 Laura Ln	210
36		9.B-1-36	0.06	29 Laura Ln	210
37		9.B-1-37	0.05	46 Laura Ln	210
38		9.B-1-38	0.06	20 James Pl	210
39		9.B-1-39	0.05	38 Laura Ln	210
4		9.B-1-4	0.06	1 Laura Ln	210
40		9.B-1-40	0.05	48 Laura Ln	210
41		9.B-1-41	0.05	31 Laura Ln	210
42		9.B-1-42	0.05	40 Laura Ln	210
43		9.B-1-43	0.05	30 Laura Ln	210
44		9.B-1-44	0.05	24 Laura Ln	210
45		9.B-1-45	0.06	42 Laura Ln	210
46		9.B-1-46	0.07	27 Laura Ln	210
47		9.B-1-47	0.05	32 Laura Ln	210
48		9.B-1-48	0.05	16 James Pl	210
49		9.B-1-49	0.05	28 Laura Ln	210
5		9.B-1-5	0.05	17 Laura Ln	210
50		9.B-1-50	0.05	50 Laura Ln	210
51		9.B-1-51	0.05	9 Medallion Rd	210
52		9.B-1-52	0.05	10 Laura Ln	210
6		9.B-1-6	0.05	15 Laura Ln	210
7		9.B-1-7	0.05	9 Laura Ln	210
8		9.B-1-8	1.63	State Route 42	314
9		9.B-1-9	0.05	5 Laura Ln	210
1		9.C-1-1	0.05	65 Robert Rd	210
10		9.C-1-10	1.50	Robert Rd	314
1		9.C-11-1	0.05	38 Medallion Rd	210
2		9.C-11-2	0.05	36 Medallion Rd	210
2		9.C-1-2	0.06	61 Robert Rd	210
1		9.C-12-1	0.05	44 Medallion Rd	210
2		9.C-12-2	0.05	42 Medallion Rd	210

ParcelNumb	Suffix	PrintKey	Acreage	Phys_Addre	PROP_CLASS
3		9.C-1-3	0.05	63 Robert Rd	210
1		9.C-13-1	0.05	54 Medallion Rd	210
2		9.C-13-2	0.05	52 Medallion Rd	210
4		9.C-1-4	0.05	59 Robert Rd	210
1		9.C-14-1	0.05	60 Medallion Rd	210
2		9.C-14-2	0.05	58 Medallion Rd	210
5		9.C-1-5	0.05	67 Robert Rd	210
1		9.C-15-1	0.06	17 Peter Way	210
2		9.C-15-2	0.05	19 Peter Way	210
6		9.C-1-6	0.05	69 Robert Rd	210
1		9.C-16-1	0.05	21 Peter Way	210
2		9.C-16-2	0.05	23 Peter Way	210
1		9.C-17-1	0.06	16 Peter Way	210
2		9.C-17-2	0.05	14 Peter Way	210
1		9.C-18-1	0.05	12 Peter Way	210
2		9.C-18-2	0.05	10 Peter Way	210
1		9.C-19-1	0.05	8 Peter Way	210
2		9.C-19-2	0.05	6 Peter Way	210
1		9.C-20-1	0.05	4 Peter Way	210
2		9.C-20-2	0.05	2 Peter Way	210
1		9.C-2-1	0.05	65 Medallion Rd	210
2		9.C-2-2	0.05	67 Medallion Rd	210
1		9.C-23-1	3.83	Robert Rd	554
1		9.C-26-1	0.05	25 Peter Way	210
2		9.C-26-2	0.05	27 Peter Way	210
1		9.C-27-1	0.05	29 Peter Way	210
2		9.C-27-2	0.06	31 Peter Way	210
1		9.C-28-1	0.05	33 Peter Way	210
2		9.C-28-2	0.06	35 Peter Way	210
1		9.C-29-1	0.05	37 Peter Way	210
2		9.C-29-2	0.06	39 Peter Way	210
1		9.C-30-1	0.05	41 Peter Way	210
2		9.C-30-2	0.06	43 Peter Way	210
1		9.C-3-1	0.05	1 Peter Way	210
1		9.C-31-1	4.01	Peter Way	314
2		9.C-3-2	0.05	3 Peter Way	210
1		9.C-32-1	0.05	40 Peter Way	210
2		9.C-32-2	0.06	42 Peter Way	210
1		9.C-33-1	0.05	36 Peter Way	210
2		9.C-33-2	0.06	38 Peter Way	210
1		9.C-34-1	0.05	32 Peter Way	210
2		9.C-34-2	0.06	34 Peter Way	210
1		9.C-35-1	0.05	28 Peter Way	210
2		9.C-35-2	0.06	30 Peter Way	210
1		9.C-36-1	0.05	24 Robert Rd	210
2		9.C-36-2	0.07	22 Robert Rd	210

ParcelNumb	Suffix	PrintKey	Acreage	Phys_Addre	PROP_CLASS
1		9.C-37-1	0.05	36 Robert Rd	210
2		9.C-37-2	0.06	34 Robert Rd	210
1		9.C-38-1	0.05	40 Robert Rd	210
2		9.C-38-2	0.06	38 Robert Rd	210
1		9.C-39-1	0.05	44 Robert Rd	210
2		9.C-39-2	0.06	42 Robert Rd	210
1		9.C-40-1	0.05	48 Robert Rd	210
2		9.C-40-2	0.06	46 Robert Rd	210
1		9.C-4-1	0.05	5 Peter Way	210
1		9.C-41-1	0.05	52 Robert Rd	210
2		9.C-41-2	0.06	50 Robert Rd	210
2		9.C-4-2	0.05	7 Peter Way	210
1		9.C-42-1	0.05	35 Robert Rd	210
2		9.C-42-2	0.05	33 Robert Rd	210
1		9.C-43-1	0.05	39 Robert Rd	210
2		9.C-43-2	0.06	37 Robert Rd	210
1		9.C-44-1	0.05	43 Robert Rd	210
2		9.C-44-2	0.06	41 Robert Rd	210
1		9.C-45-1	0.05	36 Elizabeth Way	210
2		9.C-45-2	0.06	34 Elizabeth Way	210
1		9.C-46-1	0.06	47 Elizabeth Way	210
2		9.C-46-2	0.05	45 Elizabeth Way	210
1		9.C-47-1	0.06	43 Elizabeth Way	210
2		9.C-47-2	0.05	41 Elizabeth Way	210
1		9.C-48-1	0.06	39 Elizabeth Way	210
2		9.C-48-2	0.05	37 Elizabeth Way	210
1		9.C-49-1	0.06	35 Elizabeth Way	210
2		9.C-49-2	0.05	33 Elizabeth Way	210
1		9.C-5-1	0.05	9 Peter Way	210
2		9.C-5-2	0.06	11 Peter Way	210
1		9.C-6-1	0.05	13 Peter Way	210
2		9.C-6-2	0.06	15 Peter Way	210
1		9.C-7-1	0.05	61 Medallion Rd	210
2		9.C-7-2	0.05	63 Medallion Rd	210
1		9.C-8-1	0.05	57 Medallion Rd	210
2		9.C-8-2	0.05	59 Medallion Rd	210
1		9.C-9-1	0.05	53 Medallion Rd	210
2		9.C-9-2	0.05	55 Medallion Rd	210
1.1		9.D-1-1.1	1.52	State Route 42	554
1.2		9.D-1-1.2	1.67	State Route 42	314
1.3		9.D-1-1.3	14.93	State Route 42	330
1.4		9.D-1-1.4	0.47	State Route 42	311
10		9.D-1-10	0.12	4772 State Route 42	260
11		9.D-1-11	0.15	4772 State Route 42	260
12		9.D-1-12	0.17	4772 State Route 42	260
13		9.D-1-13	0.11	4772 State Route 42	260

ParcelNumb	Suffix	PrintKey	Acreage	Phys_Addre	PROP_CLASS
14		9.D-1-14	0.21	4772 State Route 42	260
15		9.D-1-15	0.17	4772 State Route 42	260
16		9.D-1-16	0.04	State Route 42	853
17		9.D-1-17	0.16	4772 State Route 42	260
18		9.D-1-18	0.01	State Route 42	311
19		9.D-1-19	0.12	4772 State Route 42	260
2		9.D-1-2	0.21	4772 State Route 42	260
20		9.D-1-20	0.12	4772 State Route 42	260
21		9.D-1-21	0.13	4772 State Route 42	260
22		9.D-1-22	0.13	4772 State Route 42	260
23		9.D-1-23	0.12	4772 State Route 42	260
24		9.D-1-24	0.12	4772 State Route 42	260
25		9.D-1-25	0.10	4772 State Route 42	260
26		9.D-1-26	0.12	4772 State Route 42	260
27		9.D-1-27	4.16	State Route 42	314
28		9.D-1-28	0.80	State Route 42	341
29		9.D-1-29	0.35	State Route 42	311
3		9.D-1-3	0.27	4772 State Route 42	280
4		9.D-1-4	0.17	4772 State Route 42	260
5		9.D-1-5	0.04	State Route 42	311
6		9.D-1-6	0.23	4772 State Route 42	260
7		9.D-1-7	0.12	4772 State Route 42	260
9		9.D-1-9	0.12	4772 State Route 42	260
1		9.E-10-1	0.06	11 Elizabeth Way	210
2		9.E-10-2	0.05	9 Elizabeth Way	210
1		9.E-1-1	5.18	Robert Rd	311
1		9.E-11-1	0.06	7 Elizabeth Way	210
2		9.E-11-2	0.05	5 Elizabeth Way	210
1		9.E-14-1	0.05	61 Peter Way	210
2		9.E-14-2	0.06	59 Peter Way	210
1		9.E-15-1	0.06	57 Peter Way	210
2		9.E-15-2	0.05	55 Peter Way	210
1		9.E-16-1	0.06	53 Peter Way	210
2		9.E-16-2	0.05	51 Peter Way	210
1		9.E-17-1	0.05	54 Peter Way	210
2		9.E-17-2	0.05	56 Peter Way	210
1		9.E-18-1	0.06	58 Peter Way	210
2		9.E-18-2	0.05	60 Peter Way	210
1		9.E-20-1	0.06	14 Robert Rd	210
2		9.E-20-2	0.05	16 Robert Rd	210
1		9.E-2-1	0.06	25 Kathleen Ct	210
1		9.E-21-1	0.06	18 Robert Rd	210
2		9.E-21-2	0.05	20 Robert Rd	210
2		9.E-2-2	0.06	23 Kathleen Ct	210
1		9.E-23-1	0.06	8 Elizabeth Way	210
2		9.E-23-2	0.05	10 Elizabeth Way	210

ParcelNumb	Suffix	PrintKey	Acreage	Phys_Addre	PROP_CLASS
1		9.E-24-1	0.05	14 Elizabeth Way	210
2		9.E-24-2	0.06	16 Elizabeth Way	210
1		9.E-25-1	0.06	18 Elizabeth Way	210
2		9.E-25-2	0.06	20 Elizabeth Way	210
1		9.E-26-1	0.06	17 Robert Rd	210
2		9.E-26-2	0.06	19 Robert Rd	210
1		9.E-28-1	0.06	2 Kathleen Ct	210
2		9.E-28-2	0.05	4 Kathleen Ct	210
1		9.E-29-1	0.06	8 Kathleen Ct	210
2		9.E-29-2	0.05	10 Kathleen Ct	210
1		9.E-30-1	0.06	12 Kathleen Ct	210
2		9.E-30-2	0.05	14 Kathleen Ct	210
1		9.E-3-1	0.06	21 Kathleen Ct	210
2		9.E-3-2	0.05	19 Kathleen Ct	210
1		9.E-4-1	0.05	17 Kathleen Ct	210
2		9.E-4-2	0.05	15 Kathleen Ct	210
1		9.E-5-1	0.06	11 Kathleen Ct	210
2		9.E-5-2	0.05	9 Kathleen Ct	210
1		9.E-6-1	0.06	7 Kathleen Ct	210
2		9.E-6-2	0.06	5 Kathleen Ct	210
1		9.E-7-1	0.06	3 Kathleen Ct	210
2		9.E-7-2	0.05	1 Kathleen Ct	210
1		9.E-8-1	0.05	19 Elizabeth Way	210
2		9.E-8-2	0.06	17 Elizabeth Way	210
1		9.E-9-1	0.06	15 Elizabeth Way	210
2		9.E-9-2	0.05	13 Elizabeth Way	210

APPENDIX E

Consolidated Sewer District Boundary Description

Note: This description was created from the Town of Thompson Tax Parcels 2020 GIS Tax Parcels and is not based on an actual field survey.

Part 1: BEGINNING at the point of intersection between the Southwestern corner of Lot 6.-1-11.7 and the right-of-way of Gibber Rd. and continuing counterclockwise along the following bearings:

- Bearing 13°6'51.11", 55.46 Feet;
- Bearing 14°16'14.19", 55.46 Feet;
- Bearing 8°15'26.79", 91.65 Feet;
- Bearing 8°49'0.66", 91.65 Feet;
- Bearing 9°22'33.72", 91.65 Feet;-
- Bearing 6°55'58.68", 152.3 Feet;
- Bearing 7°15'23.35", 93.32 Feet;
- Bearing 7°32'51.35", 63.77 Feet;

Thence continuing across the Right-of-way for Gibber Rd. at a Bearing of 269°36'38.63", 50.27 Feet;

- Bearing 246°41'15.96", 847.02 Feet;
- Bearing 246°21'4.8", 369.86 Feet;
- Bearing 105°34'8.58", 333.59 Feet;
- Bearing 184°38'35.87", 230.25 Feet;
- Bearing 180°0'0", 85.42 Feet;
- Bearing 187°20'4.01", 637.79 Feet;
- Bearing 187°20'3.42", 329.91 Feet;
- Bearing 186°59'22.18", 1247.07 Feet;
- Bearing 97°32'40.49", 170.69 Feet;
- Bearing 162°5'47.93", 152.86 Feet;
- Bearing 162°5'48.36", 389.28 Feet;

Thence continuing across the Right-of-way for State Route 42 at a Bearing of 163°6'30.96", 51.23 Feet;

- Bearing 58°47'47.67", 65.7 Feet;
- Bearing 59°39'32.52", 80.98 Feet;
- Bearing 60°31'15.95", 80.98 Feet;
- Bearing 61°22'59.2", 80.98 Feet;
- Bearing 62°8'11.62", 75.19 Feet;
- Bearing 62°57'41.63", 75.19 Feet;
- Bearing 59°41'36.67", 51.75 Feet;
- Bearing 60°11'7.19", 51.75 Feet;
- Bearing 60°47'39.38", 75.71 Feet;
- Bearing 61°31'8.78", 75.72 Feet;
- Bearing 62°14'39.04", 75.71 Feet;
- Bearing 62°53'41.62", 70.16 Feet;
- Bearing 61°38'23.26", 75.4 Feet;
- Bearing 62°3'48.22", 75.4 Feet;
- Bearing 62°28'24.4", 91.21 Feet;
- Bearing 62°58'20.21", 91.21 Feet;

- Bearing 63°28'14.22", 91.21 Feet;
- Bearing 63°43'21.36", 32.32 Feet;
- Bearing 63°43'43.72", 11.01 Feet;
- Bearing 65°0'42.59", 33.45 Feet;
- Bearing 64°18'46.87", 84.16 Feet;
- Bearing 63°18'20.49", 84.16 Feet;
- Bearing 62°17'54.67", 84.16 Feet;
- Bearing 61°44'57.36", 20.06 Feet;
- Bearing 61°45'34.36", 4.69 Feet;
- Bearing 61°16'40.54", 52.02 Feet;
- Bearing 60°5'28.62", 50.31 Feet;
- Bearing 58°58'6.17", 50.31 Feet;
- Bearing 57°50'42.92", 50.31 Feet;
- Bearing 56°46'17.08", 55.72 Feet;
- Bearing 55°44'14.59", 55.72 Feet;
- Bearing 56°26'23.94", 2.49 Feet;
- Bearing 54°34'15.91", 37.89 Feet;
- Bearing 187°51'45.21", 76.89 Feet;
- Bearing 187°51'42.82", 81.04 Feet;
- Bearing 187°51'43.37", 62.41 Feet;
- Bearing 187°51'44.95", 56 Feet;
- Bearing 187°51'47.24", 53.87 Feet;
- Bearing 187°51'42.72", 85.27 Feet;
- Bearing 188°0'2.69", 10.01 Feet;
- Bearing 187°43'19.94", 10.01 Feet;
- Bearing 187°43'19.93", 9.24 Feet;
- Bearing 187°43'17", 32.45 Feet;
- Bearing 187°43'15.37", 80.24 Feet;
- Bearing 187°43'20.84", 18.55 Feet;
- Bearing 187°43'15.14", 16.53 Feet;
- Bearing 187°43'37.85", 1.83 Feet;
- Bearing 187°43'17.48", 49.76 Feet;
- Bearing 187°43'13.68", 65.06 Feet;
- Bearing 187°43'13.69", 9.07 Feet;
- Bearing 187°43'15.73", 10 Feet;
- Bearing 187°43'11.56", 3.89 Feet;
- Bearing 187°43'17.13", 48.83 Feet;
- Bearing 187°43'11.45", 28.86 Feet;
- Bearing 187°42'23.21", 716.2 Feet;
- Bearing 100°53'51.6", 243.36 Feet;
- Bearing 186°59'53.36", 371.35 Feet;
- Bearing 186°59'53.26", 198.74 Feet;

Thence continuing across the Right-of-way for Kiamesha Lake Rd. at a Bearing of 203°4'48.21", 58.31 Feet;

- Bearing 176°57'46.27", 0.81 Feet;

- Bearing 176°59'21.36", 25 Feet;
- Bearing 178°30'4.63", 110.68 Feet;
- Bearing 178°30'4.19", 323.52 Feet;
- Bearing 175°16'30.62", 14.36 Feet;
- Bearing 177°26'18.23", 14.36 Feet;
- Bearing 179°13'27.23", 10.32 Feet;
- Bearing 181°16'28.37", 17.33 Feet;
- Bearing 183°52'42.09", 17.33 Feet;
- Bearing 186°28'53.51", 17.33 Feet;
- Bearing 189°22'43.07", 22.34 Feet;
- Bearing 192°42'13.24", 22.34 Feet;
- Bearing 196°1'45.51", 22.34 Feet;
- Bearing 199°21'14.61", 22.34 Feet;
- Bearing 202°40'44.26", 22.34 Feet;
- Bearing 206°0'15.63", 22.34 Feet;
- Bearing 209°19'45.77", 22.34 Feet;
- Bearing 210°59'38.02", 229.99 Feet;
- Bearing 211°2'46.97", 2.81 Feet;
- Bearing 211°11'24.54", 573.74 Feet;
- Bearing 211°7'31.43", 0.52 Feet;
- Bearing 211°9'12.31", 21.04 Feet;
- Bearing 211°25'53.35", 3.25 Feet;
- Bearing 224°39'23.28", 50.96 Feet;
- Bearing 224°39'26.35", 5.9 Feet;
- Bearing 224°39'25.2", 16.78 Feet;
- Bearing 233°35'42.1", 544.58 Feet;
- Bearing 238°2'41.93", 443.71 Feet;
- Bearing 327°19'3.15", 16.46 Feet;
- Bearing 234°2'58.6", 290 Feet;
- Bearing 225°51'46.43", 84.65 Feet;
- Bearing 225°51'36.31", 181.75 Feet;
- Bearing 281°57'28.58", 21.38 Feet;
- Bearing 220°57'45.23", 202.19 Feet;
- Bearing 228°4'40.15", 237 Feet;
- Bearing 214°49'37.46", 54 Feet;
- Bearing 239°3'40.25", 68 Feet;
- Bearing 228°4'37.01", 125 Feet;
- Bearing 242°28'39.5", 234.09 Feet;
- Bearing 242°28'40.11", 37.91 Feet;
- Bearing 260°49'37.87", 411.01 Feet;
- Bearing 272°50'39.22", 290.06 Feet;
- Bearing 219°28'40.92", 6.74 Feet;
- Bearing 268°49'49.91", 59.28 Feet;
- Bearing 268°50'17.73", 5.08 Feet;
- Bearing 268°49'50.25", 58.5 Feet;
- Bearing 270°41'33.22", 240.84 Feet;

- Bearing 287°13'21.9", 59.03 Feet;
- Bearing 264°22'25.33", 88.8 Feet;
- Bearing 264°22'20.99", 48.4 Feet;
- Bearing 264°22'28.04", 23.84 Feet;
- Bearing 264°22'21.6", 35 Feet;
- Bearing 254°43'25.29", 279.78 Feet;
- Bearing 254°43'25.33", 775.21 Feet;
- Bearing 254°48'17.04", 25.01 Feet;
- Bearing 169°14'19.34", 12.27 Feet;
- Bearing 253°29'19.95", 22.3 Feet;
- Bearing 253°29'30.78", 100.47 Feet;
- Bearing 253°29'2.05", 24.91 Feet;
- Bearing 268°26'17.21", 62.59 Feet;
- Bearing 22°59'25.19", 151.82 Feet;
- Bearing 32°17'27.49", 25 Feet;
- Bearing 9°0'25.41", 197.2 Feet;
- Bearing 354°7'19.62", 49.9 Feet;
- Bearing 346°27'55.53", 185.77 Feet;
- Bearing 341°52'29.32", 72.5 Feet;
- Bearing 64°41'46.6", 25.19 Feet;
- Bearing 65°13'50.71", 25.84 Feet;
- Bearing 334°41'31.75", 30 Feet;
- Bearing 61°11'39.53", 16.93 Feet;
- Bearing 338°32'42.92", 33.17 Feet;
- Bearing 336°44'58.88", 33.17 Feet;
- Bearing 334°57'11.95", 33.17 Feet;
- Bearing 333°9'25.79", 33.17 Feet;
- Bearing 331°21'39.6", 33.17 Feet;
- Bearing 330°23'25.16", 328.21 Feet;

Thence continuing across the Right-of-way for State Route 42 at a Bearing of 234°4'41.28", 54.6 Feet;

- Bearing 235°32'20.73", 271 Feet;
- Bearing 340°55'21.53", 82.93 Feet;
- Bearing 291°55'35.16", 2.01 Feet;
- Bearing 291°55'20.57", 290.37 Feet;
- Bearing 168°16'49.66", 58.13 Feet;
- Bearing 168°16'43.57", 8.59 Feet;
- Bearing 162°16'11.43", 79.2 Feet;
- Bearing 150°46'12.78", 54.78 Feet;
- Bearing 133°16'11.78", 47.52 Feet;
- Bearing 134°16'26.21", 38.94 Feet;
- Bearing 144°16'8.3", 48.18 Feet;
- Bearing 159°46'13.71", 39.6 Feet;
- Bearing 134°15'12.56", 29.7 Feet;
- Bearing 147°45'15.39", 36.96 Feet;
- Bearing 135°15'17.73", 25.08 Feet;

- Bearing 123°15'8.28", 52.14 Feet;
- Bearing 188°2'14.65", 141.15 Feet;
- Bearing 188°2'14.61", 38.28 Feet;
- Bearing 188°2'14.55", 384.85 Feet;
- Bearing 188°2'14.42", 57.17 Feet;
- Bearing 188°3'22.48", 0.58 Feet;
- Bearing 188°2'14.99", 42.69 Feet;
- Bearing 81°54'13.18", 5.12 Feet;
- Bearing 81°54'12.92", 103.05 Feet;
- Bearing 81°54'12.83", 112.13 Feet;
- Bearing 171°54'13.89", 292 Feet;

Thence continuing across the Right-of-way for Lanahan Rd. at a Bearing of 112°54'36.97", 86.89 Feet;

- Bearing 208°12'36.84", 240.97 Feet;

Thence continuing across the Right-of-way for State Route 42 at a Bearing of 124°16'9.24", 124.08 Feet;

- Bearing 111°54'57.77", 120.76 Feet;
- Bearing 111°54'57.91", 0.82 Feet;
- Bearing 111°54'14.49", 0.85 Feet;
- Bearing 111°54'56.73", 227.33 Feet;
- Bearing 112°10'13.28", 0.16 Feet;
- Bearing 112°20'26.33", 0.03 Feet;
- Bearing 111°54'56.05", 176.37 Feet;
- Bearing 21°4'45.84", 23.97 Feet;
- Bearing 78°51'49.58", 12.63 Feet;
- Bearing 225°0'0", 0.61 Feet;
- Bearing 78°40'5.67", 101.17 Feet;
- Bearing 78°51'41.66", 59.31 Feet;
- Bearing 78°54'20.85", 62.7 Feet;
- Bearing 86°14'36.79", 0.07 Feet;
- Bearing 41°3'17.28", 0.01 Feet;
- Bearing 46°4'51.33", 0.09 Feet;
- Bearing 47°34'44.92", 0.05 Feet;
- Bearing 216°12'9.32", 0.04 Feet;
- Bearing 111°43'27.11", 0.05 Feet;
- Bearing 112°13'46.63", 0.04 Feet;
- Bearing 111°54'43.69", 9.39 Feet;
- Bearing 111°54'59.67", 64.26 Feet;
- Bearing 111°54'55.16", 80.59 Feet;
- Bearing 111°54'58.55", 13.49 Feet;
- Bearing 111°54'56.24", 133.53 Feet;
- Bearing 112°58'6.65", 4.02 Feet;
- Bearing 111°37'33.65", 7.48 Feet;
- Bearing 111°37'52.72", 7.12 Feet;
- Bearing 10°25'56.48", 513.13 Feet;
- Bearing 6°29'3.37", 27.69 Feet;

- Bearing 6°28'57.37", 288.59 Feet;
- Bearing 75°3'57.55", 28.46 Feet;
- Bearing 75°3'56.95", 194.53 Feet;
- Bearing 176°29'50.27", 381.78 Feet;
- Bearing 99°26'49.83", 160.97 Feet;
- Bearing 99°26'49.69", 216.73 Feet;
- Bearing 40°42'49.28", 184.8 Feet;
- Bearing 38°36'50.49", 96.05 Feet;
- Bearing 38°36'51.09", 51.87 Feet;
- Bearing 38°36'52.26", 21.97 Feet;
- Bearing 38°36'52.34", 90.14 Feet;
- Bearing 27°33'12.65", 112.48 Feet;
- Bearing 25°11'48.09", 3.61 Feet;
- Bearing 108°55'19.51", 37.32 Feet;
- Bearing 205°57'54.02", 200 Feet;
- Bearing 85°53'58.75", 200.13 Feet;
- Bearing 25°57'56.91", 199.73 Feet;
- Bearing 86°13'11.49", 204.03 Feet;
- Bearing 86°5'39.53", 185.63 Feet;
- Bearing 183°39'57.07", 202.81 Feet;
- Bearing 183°31'22.95", 61.1 Feet;
- Bearing 184°48'40.56", 61.1 Feet;
- Bearing 186°5'55.79", 61.1 Feet;
- Bearing 187°23'14.25", 61.1 Feet;
- Bearing 188°40'30.14", 41.92 Feet;

Thence continuing across the Right-of-way for Rock Ridge Dr. at a Bearing of 104°30'45.14", 45.6 Feet;

- Bearing 105°33'12.57", 203.06 Feet;
- Bearing 188°43'17.01", 100.33 Feet;
- Bearing 285°33'9.58", 100.87 Feet;
- Bearing 192°55'15", 80.3 Feet;
- Bearing 101°35'15.83", 563.74 Feet;
- Bearing 188°27'45.79", 85.73 Feet;
- Bearing 188°8'53.04", 235.31 Feet;
- Bearing 280°56'12.29", 353.57 Feet;
- Bearing 280°39'3.51", 315.93 Feet;

Thence continuing across the Right-of-way for Rock Ridge Dr. at a Bearing of 278°58'22.08", 45.26 Feet;

- Bearing 187°12'41.73", 76.97 Feet;
- Bearing 187°53'24.39", 55.58 Feet;

Thence continuing across the Right-of-way for Rock Ridge Dr. at a Bearing of 94°25'25.27", 46.81 Feet;

- Bearing 97°24'28.43", 137.92 Feet;
- Bearing 191°9'3.33", 142.15 Feet;
- Bearing 276°49'10.36", 130.7 Feet;

Thence continuing across the Right-of-way for Rock Ridge Dr. at a Bearing of 273°49'10.42", 47.17 Feet;

- Bearing 187°28'45.55", 730 Feet;
- Bearing 186°32'31.66", 37.21 Feet;

Thence continuing across the Right-of-way for Rock Ridge Dr. at a Bearing of 97°28'43.8", 49.49 Feet;

- Bearing 97°51'36.63", 306.88 Feet;
- Bearing 188°42'36.93", 340.69 Feet;
- Bearing 282°49'19.6", 307.59 Feet;
- Bearing 8°42'5.09", 148.7 Feet;

Thence continuing across the Right-of-way for Rock Ridge Dr. at a Bearing of 278°57'39.17", 47.34 Feet;

- Bearing 281°18'24.84", 260.07 Feet;
- Bearing 281°18'23.75", 22.11 Feet;
- Bearing 281°18'25.05", 178.45 Feet;
- Bearing 188°41'38.08", 160.89 Feet;
- Bearing 100°30'49.02", 159.47 Feet;
- Bearing 100°26'20.9", 22.81 Feet;
- Bearing 100°26'21.43", 66.93 Feet;
- Bearing 100°26'19.23", 22.31 Feet;
- Bearing 100°26'22.15", 15.23 Feet;
- Bearing 100°26'21.23", 16.64 Feet;
- Bearing 100°26'20.34", 148.72 Feet;
- Bearing 195°5'30.61", 110.36 Feet;
- Bearing 195°5'30.71", 157.34 Feet;
- Bearing 200°0'21.26", 62.34 Feet;
- Bearing 199°46'1.93", 32.34 Feet;
- Bearing 200°1'14.48", 43.33 Feet;

Thence continuing across the Right-of-way for Rock Ridge Dr. at a Bearing of 100°26'57.74", 58.48 Feet;

- Bearing 100°9'45.57", 1290.94 Feet;
- Bearing 215°32'15.38", 90.34 Feet;
- Bearing 244°5'45.88", 172.52 Feet;
- Bearing 247°50'39.05", 232.88 Feet;
- Bearing 99°9'35.17", 746.63 Feet;
- Bearing 99°9'35.21", 235.99 Feet;
- Bearing 26°19'0.88", 100.65 Feet;
- Bearing 26°18'57.79", 12.46 Feet;
- Bearing 32°27'32.88", 31.44 Feet;
- Bearing 32°27'31.22", 145.66 Feet;
- Bearing 32°27'31.18", 399.46 Feet;
- Bearing 31°32'34.87", 3.76 Feet;
- Bearing 102°14'26.9", 175.9 Feet;
- Bearing 194°34'9.95", 9.65 Feet;
- Bearing 195°11'49.08", 17.72 Feet;
- Bearing 195°11'44.8", 47.81 Feet;

- Bearing 195°11'38.06", 40.32 Feet;
- Bearing 216°52'12.49", 63.06 Feet;
- Bearing 213°41'24.93", 54.56 Feet;
- Bearing 206°34'0.15", 50.76 Feet;
- Bearing 213°6'35.88", 69.26 Feet;
- Bearing 221°59'15.45", 33.93 Feet;
- Bearing 212°44'1.49", 41.98 Feet;
- Bearing 218°39'37.49", 48.45 Feet;
- Bearing 232°7'43.27", 28.76 Feet;
- Bearing 213°41'10.48", 27.28 Feet;
- Bearing 174°48'22.26", 27.86 Feet;
- Bearing 163°18'0.51", 26.33 Feet;
- Bearing 165°57'51.63", 31.2 Feet;
- Bearing 191°18'37.48", 38.58 Feet;
- Bearing 191°18'34.47", 51.45 Feet;
- Bearing 230°42'43.45", 35.85 Feet;
- Bearing 210°57'46.76", 29.41 Feet;
- Bearing 184°5'6.72", 35.4 Feet;
- Bearing 194°2'19.42", 31.2 Feet;
- Bearing 229°27'37.49", 126.12 Feet;
- Bearing 202°31'59.35", 256.69 Feet;
- Bearing 190°14'4.96", 184.54 Feet;
- Bearing 198°9'9.99", 129.54 Feet;
- Bearing 198°9'14.02", 17.75 Feet;
- Bearing 198°9'10.26", 58.77 Feet;
- Bearing 198°9'11.34", 52.1 Feet;
- Bearing 229°33'49.61", 15.37 Feet;
- Bearing 229°32'50.81", 295.41 Feet;
- Bearing 356°26'17.7", 108.07 Feet;
- Bearing 356°26'19.37", 26.33 Feet;
- Bearing 357°38'37.16", 34.37 Feet;
- Bearing 357°38'35.17", 7.22 Feet;
- Bearing 303°5'23.62", 436.18 Feet;
- Bearing 258°19'23.47", 580.8 Feet;
- Bearing 317°35'23.54", 585.14 Feet;
- Bearing 302°35'23.61", 290.4 Feet;
- Bearing 347°48'23.67", 247 Feet;
- Bearing 309°1'23.4", 95.45 Feet;

Thence continuing across the Right-of-way for Rock Ridge Dr. at a Bearing of 299°37'6.54", 51.85 Feet;

- Bearing 217°49'18.77", 18.78 Feet;
- Bearing 220°41'28.23", 18.78 Feet;
- Bearing 223°33'42.81", 18.78 Feet;
- Bearing 226°25'54.34", 18.78 Feet;
- Bearing 228°0'10.43", 207.69 Feet;
- Bearing 231°44'36.84", 20.17 Feet;

- Bearing 234°17'7.32", 23.3 Feet;
- Bearing 236°49'6.7", 36.8 Feet;
- Bearing 239°1'26.64", 36.8 Feet;
- Bearing 241°13'49.7", 36.8 Feet;
- Bearing 243°26'7.46", 36.8 Feet;
- Bearing 245°38'29.33", 36.8 Feet;
- Bearing 250°5'7.85", 14.67 Feet;
- Bearing 248°7'43.16", 14.67 Feet;
- Bearing 247°43'47.04", 1.01 Feet;
- Bearing 245°51'45.09", 24.56 Feet;
- Bearing 242°49'37.61", 24.56 Feet;
- Bearing 239°47'36.3", 24.56 Feet;
- Bearing 236°45'28.81", 24.56 Feet;
- Bearing 233°43'27.39", 24.56 Feet;
- Bearing 230°41'20.99", 24.56 Feet;
- Bearing 237°52'51.67", 53.29 Feet;
- Bearing 239°27'29.16", 53.29 Feet;
- Bearing 242°41'24.35", 23.74 Feet;
- Bearing 355°52'19.54", 173.74 Feet;
- Bearing 270°53'18.28", 197.06 Feet;
- Bearing 175°52'18.79", 200.87 Feet;
- Bearing 277°9'6.62", 99.61 Feet;
- Bearing 277°19'20.53", 13.07 Feet;
- Bearing 277°10'19.34", 42.99 Feet;
- Bearing 277°31'56.58", 69.97 Feet;
- Bearing 277°55'31.96", 69.97 Feet;
- Bearing 281°48'24.23", 11.57 Feet;
- Bearing 275°49'43.62", 11.57 Feet;
- Bearing 269°51'7.7", 11.57 Feet;
- Bearing 263°52'20.15", 11.57 Feet;
- Bearing 257°53'45.37", 11.57 Feet;
- Bearing 251°55'1.3", 11.57 Feet;
- Bearing 245°56'23.43", 11.57 Feet;
- Bearing 241°50'6.91", 6.71 Feet;
- Bearing 282°8'47.12", 5.64 Feet;
- Bearing 282°8'44.73", 32.98 Feet;
- Bearing 282°8'46.36", 25.87 Feet;
- Bearing 282°8'48.7", 37.9 Feet;
- Bearing 282°8'48.3", 83.96 Feet;
- Bearing 282°8'48.12", 203.74 Feet;
- Bearing 282°8'48.04", 57.22 Feet;
- Bearing 319°23'58.19", 33.47 Feet;
- Bearing 319°24'0.36", 16.07 Feet;
- Bearing 353°2'48.99", 296.76 Feet;
- Bearing 33°41'20.07", 17.99 Feet;
- Bearing 33°41'25.5", 59.73 Feet;

- Bearing 348°59'45.96", 131.75 Feet;
- Bearing 4°26'15.57", 246.43 Feet;
- Bearing 194°37'28.36", 311.68 Feet;
- Bearing 308°6'49.99", 698.78 Feet;
- Bearing 308°6'50", 397 Feet;
- Bearing 349°50'49.84", 268.47 Feet;
- Bearing 305°14'30.2", 33.36 Feet;
- Bearing 298°58'49.39", 91.88 Feet;

Thence continuing across the Right-of-way for State Route 42 at a Bearing of 299°3'8.51", 175.23 Feet;

- Bearing 204°27'29.95", 82.2 Feet;
- Bearing 225°50'29.18", 134.2 Feet;
- Bearing 225°52'51.84", 51.1 Feet;
- Bearing 256°50'28.57", 940.24 Feet;
- Bearing 271°28'56.49", 45.77 Feet;
- Bearing 22°40'42.84", 20 Feet;
- Bearing 306°20'44.15", 127.18 Feet;
- Bearing 35°32'44.21", 48.46 Feet;
- Bearing 298°15'4.02", 315.17 Feet;
- Bearing 7°25'27.31", 684.31 Feet;
- Bearing 5°41'11.76", 46.7 Feet;
- Bearing 5°41'14.53", 74.9 Feet;

Thence continuing across the Right-of-way for Bard Rd. at a Bearing of 281°5'7.82", 42.3 Feet;

- Bearing 282°0'52.14", 1669.37 Feet;
- Bearing 286°21'26.21", 279.26 Feet;
- Bearing 7°19'17.41", 687.41 Feet;
- Bearing 7°37'1.53", 562.56 Feet;
- Bearing 102°15'5.45", 952.98 Feet;
- Bearing 19°21'33.19", 155.92 Feet;
- Bearing 100°50'28.16", 831.77 Feet;

Thence continuing across the Right-of-way for Anawana Lake Rd. at a Bearing of 79°29'51.83", 144.74 Feet;

- Bearing 100°42'28.79", 527.69 Feet;
- Bearing 3°37'15.36", 884.3 Feet;
- Bearing 7°29'1.58", 381.92 Feet;
- Bearing 105°8'22.51", 141.1 Feet;
- Bearing 105°19'20.11", 168.13 Feet;
- Bearing 105°17'3.6", 1.64 Feet;
- Bearing 105°14'20.95", 272.21 Feet;
- Bearing 16°15'21.35", 33.42 Feet;
- Bearing 16°15'20", 110.94 Feet;
- Bearing 16°15'20.72", 31.77 Feet;
- Bearing 19°6'11.08", 100.65 Feet;

- Bearing 19°6'5.77", 10.19 Feet;
- Bearing 16°55'33.86", 288.79 Feet;
- Bearing 282°43'54.94", 42.02 Feet;
- Bearing 8°23'33.12", 180.5 Feet;
- Bearing 8°23'32.83", 1043.57 Feet;
- Bearing 270°24'21.16", 223.33 Feet;
- Bearing 345°36'4.98", 12.44 Feet;
- Bearing 345°35'59.82", 422.64 Feet;
- Bearing 1°10'28.83", 179.74 Feet;
- Bearing 258°38'13.53", 132.08 Feet;
- Bearing 258°37'29.02", 460.45 Feet;
- Bearing 258°36'14.44", 0.64 Feet;
- Bearing 280°49'25.57", 170.98 Feet;
- Bearing 280°53'43.25", 47.94 Feet;
- Bearing 280°57'30.82", 4.76 Feet;
- Bearing 280°44'18.27", 118 Feet;
- Bearing 280°48'22.24", 4.66 Feet;
- Bearing 280°48'24.45", 86 Feet;

Thence continuing across the Right-of-way for Anawana Lake Rd. at a Bearing of 278°3'17.39", 49.73 Feet;

- Bearing 183°17'47.17", 82.54 Feet;
- Bearing 183°43'44.3", 93.86 Feet;
- Bearing 184°9'7.6", 93.86 Feet;
- Bearing 185°28'3.53", 53.47 Feet;
- Bearing 184°27'1.03", 53.47 Feet;
- Bearing 183°25'59.76", 53.47 Feet;
- Bearing 182°34'52.9", 40.1 Feet;
- Bearing 252°47'9.35", 179.37 Feet;
- Bearing 190°3'25.58", 146.88 Feet;
- Bearing 190°3'26.65", 99.03 Feet;
- Bearing 95°40'3.16", 196.7 Feet;
- Bearing 181°21'11.68", 722.02 Feet;
- Bearing 281°17'55.49", 372.8 Feet;
- Bearing 281°18'24.37", 661.08 Feet;
- Bearing 6°14'34.17", 1631.22 Feet;
- Bearing 100°43'25.32", 571.58 Feet;
- Bearing 100°43'26.35", 41.81 Feet;
- Bearing 100°43'25.09", 169.32 Feet;
- Bearing 100°43'24.94", 24.41 Feet;
- Bearing 100°43'25.83", 120.24 Feet;

Thence continuing across the Right-of-way for Anawana Lake Rd. at a Bearing of 86°29'59.23", 49.72 Feet;

- Bearing 357°54'35.06", 59.91 Feet;
- Bearing 357°54'32.69", 64.47 Feet;

- Bearing 354°19'42.75", 20.5 Feet;
- Bearing 351°59'28.98", 20.5 Feet;
- Bearing 349°25'29.39", 24.53 Feet;
- Bearing 346°37'46.88", 24.53 Feet;
- Bearing 343°50'3.46", 24.53 Feet;
- Bearing 341°2'24.6", 24.53 Feet;
- Bearing 338°14'39.37", 24.53 Feet;
- Bearing 335°26'59.11", 24.53 Feet;
- Bearing 327°3'20.09", 30.21 Feet;
- Bearing 327°2'18.21", 1.37 Feet;
- Bearing 327°3'21.27", 117.71 Feet;
- Bearing 327°2'54.55", 0.38 Feet;
- Bearing 327°3'19.12", 153.33 Feet;
- Bearing 335°17'44.4", 430 Feet;
- Bearing 336°14'5.01", 182.05 Feet;
- Bearing 340°14'4.35", 267.94 Feet;
- Bearing 101°44'4.03", 235.47 Feet;
- Bearing 101°44'4", 41.64 Feet;
- Bearing 101°44'3.35", 64.97 Feet;
- Bearing 101°44'3.62", 136.76 Feet;
- Bearing 357°38'54.47", 3.07 Feet;
- Bearing 357°39'6.33", 353.77 Feet;
- Bearing 102°3'56.82", 64.52 Feet;
- Bearing 102°4'7.91", 11.46 Feet;
- Bearing 102°4'8.29", 7.18 Feet;
- Bearing 178°2'22.43", 82 Feet;
- Bearing 178°2'4.21", 3.5 Feet;
- Bearing 178°2'20.76", 393.86 Feet;
- Bearing 97°44'21.43", 25.35 Feet;
- Bearing 97°44'23.24", 23.55 Feet;
- Bearing 97°47'13.98", 0.81 Feet;
- Bearing 97°44'26.48", 0.52 Feet;
- Bearing 97°44'14.32", 3.34 Feet;
- Bearing 97°45'50.82", 0.81 Feet;
- Bearing 97°44'19.92", 44.52 Feet;
- Bearing 130°6'21.85", 199.09 Feet;
- Bearing 129°57'37.26", 376.42 Feet;
- Bearing 5°33'21.56", 323.74 Feet;
- Bearing 6°53'59.14", 392.08 Feet;
- Bearing 100°20'41.58", 109.65 Feet;
- Bearing 99°58'58.6", 109.65 Feet;
- Bearing 99°39'27.17", 109.56 Feet;
- Bearing 99°22'9.56", 109.56 Feet;
- Bearing 186°18'29.63", 642.61 Feet;
- Bearing 96°45'32.3", 184.25 Feet;
- Bearing 16°18'18.66", 116.6 Feet;

- Bearing 107°27'50.88", 223.96 Feet;
- Bearing 5°42'39.52", 87.24 Feet;
- Bearing 283°32'48.29", 6.28 Feet;
- Bearing 283°32'52.99", 179 Feet;
- Bearing 22°23'43.61", 9.01 Feet;
- Bearing 22°23'47.89", 454.66 Feet;
- Bearing 99°36'16.37", 71.12 Feet;
- Bearing 99°52'24.24", 19.83 Feet;
- Bearing 99°52'25.24", 6.14 Feet;
- Bearing 185°6'56.95", 179.67 Feet;
- Bearing 185°6'51.09", 8.59 Feet;
- Bearing 185°7'9.73", 0.95 Feet;
- Bearing 98°33'41.08", 53.29 Feet;
- Bearing 98°33'40.78", 6.39 Feet;
- Bearing 186°40'33.07", 544.29 Feet;
- Bearing 182°23'31.37", 244.25 Feet;
- Bearing 182°35'56.58", 320.56 Feet;
- Bearing 182°30'45.48", 0.39 Feet;
- Bearing 108°5'4.39", 205.33 Feet;
- Bearing 107°59'43.95", 59.01 Feet;
- Bearing 108°5'20.97", 141 Feet;
- Bearing 352°31'58.53", 0.07 Feet;
- Bearing 349°17'1.94", 46.17 Feet;
- Bearing 347°33'42.22", 12.57 Feet;
- Bearing 347°33'38.55", 106.6 Feet;
- Bearing 17°21'37.22", 349.43 Feet;
- Bearing 112°37'47.97", 31.84 Feet;
- Bearing 4°40'0.62", 60.91 Feet;
- Bearing 4°51'51.21", 49.54 Feet;
- Bearing 4°51'52.76", 109.99 Feet;
- Bearing 357°16'27.53", 94.41 Feet;
- Bearing 7°29'44.55", 114.75 Feet;
- Bearing 10°13'25.48", 90.84 Feet;
- Bearing 100°20'7.35", 2.86 Feet;
- Bearing 100°20'35.36", 125.39 Feet;
- Bearing 100°20'36.27", 58.38 Feet;
- Bearing 105°34'51.22", 184.03 Feet;
- Bearing 18°35'12", 134.23 Feet;
- Bearing 18°35'8.7", 73.83 Feet;
- Bearing 18°35'9.94", 11.76 Feet;
- Bearing 18°35'23.81", 43.8 Feet;
- Bearing 18°34'54.79", 22.09 Feet;
- Bearing 18°35'8.65", 66.58 Feet;

Thence continuing across the Right-of-way for Fraser Rd. at a Bearing of 16°17'47.05", 49.4 Feet;

- Bearing 283°15'3.58", 109.24 Feet;

- Bearing 283°16'52.46", 24.45 Feet;
- Bearing 14°46'27.51", 194.19 Feet;
- Bearing 273°4'1.97", 62.54 Feet;
- Bearing 291°2'12.34", 79.24 Feet;
- Bearing 30°40'35.25", 66.33 Feet;
- Bearing 96°39'31.62", 121.28 Feet;
- Bearing 96°39'27.39", 20.14 Feet;
- Bearing 96°39'29.94", 201.58 Feet;
- Bearing 98°3'13.51", 74.13 Feet;
- Bearing 98°7'22", 38.83 Feet;
- Bearing 196°26'38.32", 91.39 Feet;
- Bearing 196°28'36.77", 4.2 Feet;
- Bearing 104°22'32.16", 40.12 Feet;
- Bearing 101°38'11.32", 53.32 Feet;
- Bearing 101°46'24.05", 19.4 Feet;
- Bearing 194°19'22.9", 112.98 Feet;
- Bearing 101°51'26.7", 91.57 Feet;
- Bearing 101°52'56.9", 105.66 Feet;
- Bearing 101°46'20.27", 29.09 Feet;
- Bearing 101°51'29.15", 129.16 Feet;
- Bearing 7°37'0.64", 20.42 Feet;
- Bearing 7°37'7.3", 12.86 Feet;
- Bearing 7°37'2.18", 207.17 Feet;
- Bearing 7°29'59.92", 16.19 Feet;
- Bearing 276°51'13.29", 9.57 Feet;
- Bearing 276°35'58.98", 97.15 Feet;
- Bearing 276°36'0.68", 115.47 Feet;
- Bearing 276°35'59.26", 122.21 Feet;
- Bearing 6°15'14.5", 201.87 Feet;
- Bearing 95°52'29.37", 121.15 Feet;
- Bearing 95°52'30.29", 113.94 Feet;
- Bearing 95°52'30.25", 76.47 Feet;
- Bearing 95°52'33.61", 37.76 Feet;
- Bearing 186°11'38.06", 0.04 Feet;
- Bearing 187°32'32.66", 26.2 Feet;
- Bearing 98°14'37.61", 192.91 Feet;
- Bearing 98°14'30.95", 2.21 Feet;
- Bearing 98°7'48.4", 0.03 Feet;
- Bearing 98°24'29", 14.35 Feet;
- Bearing 185°1'58.62", 0.93 Feet;
- Bearing 186°58'51.86", 186.79 Feet;
- Bearing 101°10'30.58", 172.88 Feet;
- Bearing 185°17'10.75", 24.41 Feet;
- Bearing 97°15'11.79", 42.17 Feet;
- Bearing 8°58'20.73", 29.26 Feet;
- Bearing 100°4'36.57", 108.9 Feet;

- Bearing 188°38'3.16", 45.36 Feet;
- Bearing 99°46'43.32", 260.59 Feet;
- Bearing 9°1'8.85", 175.35 Feet;
- Bearing 99°58'42.5", 192.01 Feet;
- Bearing 185°55'5.28", 154.47 Feet;
- Bearing 96°36'31.04", 59.85 Feet;
- Bearing 5°28'2.25", 180.21 Feet;
- Bearing 5°28'16.58", 4.75 Feet;
- Bearing 5°28'2.01", 316.25 Feet;
- Bearing 103°16'24.16", 38.39 Feet;
- Bearing 103°12'27.6", 148.77 Feet;
- Bearing 103°12'26.92", 89.52 Feet;
- Bearing 187°18'24.09", 307.37 Feet;
- Bearing 187°19'27.58", 4.74 Feet;
- Bearing 187°18'44.51", 536.63 Feet;
- Bearing 100°35'47.38", 12.76 Feet;
- Bearing 6°59'51.66", 201.69 Feet;
- Bearing 6°59'52.44", 334.94 Feet;
- Bearing 6°59'51.98", 439.62 Feet;
- Bearing 6°59'51.94", 2029.52 Feet;
- Bearing 6°59'52.16", 122.1 Feet;
- Bearing 6°59'51.72", 139.86 Feet;
- Bearing 6°59'52", 3150.26 Feet;
- Bearing 103°28'39.65", 85.86 Feet;
- Bearing 97°4'6.34", 78.94 Feet;
- Bearing 88°28'38.18", 31.92 Feet;
- Bearing 95°10'55.74", 81.49 Feet;
- Bearing 96°8'2.99", 81.49 Feet;
- Bearing 97°5'11.32", 81.49 Feet;
- Bearing 98°2'18.37", 81.49 Feet;
- Bearing 98°59'26.04", 81.49 Feet;
- Bearing 99°56'33.26", 81.49 Feet;
- Bearing 99°40'12.42", 160.68 Feet;
- Bearing 102°31'25.97", 1.66 Feet;
- Bearing 102°33'7.14", 520.27 Feet;
- Bearing 102°33'7.68", 21.33 Feet;

Thence continuing across the Right-of-way for Barnes Blvd. at a Bearing of 100°24'35.98", 50.06 Feet;

- Bearing 7°22'35.23", 24.01 Feet;
- Bearing 101°46'4.57", 245.72 Feet;
- Bearing 101°46'4.27", 833.34 Feet;
- Bearing 104°0'43.9", 277.74 Feet;
- Bearing 187°34'42.28", 256.21 Feet;
- Bearing 187°36'18.21", 82.19 Feet;
- Bearing 187°37'0.73", 22.86 Feet;
- Bearing 187°31'24.01", 50 Feet;

- Bearing 187°34'45.31", 100 Feet;
- Bearing 187°34'46.97", 100 Feet;
- Bearing 187°34'48.71", 199.24 Feet;
- Bearing 188°30'38.23", 138.74 Feet;
- Bearing 186°53'47.2", 1.68 Feet;
- Bearing 284°28'4.16", 185.71 Feet;
- Bearing 284°27'51.21", 96.66 Feet;
- Bearing 284°27'59.41", 4.03 Feet;
- Bearing 284°27'34.23", 4.03 Feet;
- Bearing 284°27'46.45", 96.66 Feet;
- Bearing 284°27'50.09", 100.69 Feet;
- Bearing 189°25'55.27", 35.49 Feet;
- Bearing 189°25'50.48", 100.04 Feet;
- Bearing 188°52'36.31", 96.01 Feet;
- Bearing 185°35'15.72", 4 Feet;
- Bearing 185°36'27.98", 4 Feet;
- Bearing 185°35'30.57", 96.07 Feet;
- Bearing 185°35'33.34", 100.07 Feet;
- Bearing 185°35'31.27", 115.47 Feet;
- Bearing 194°24'48.99", 108.6 Feet;

Thence continuing across the Right-of-way for Gibber Rd. at a Bearing of 193°20'20.49", 51.38 Feet;

- Bearing 101°41'13.9", 83.15 Feet;
- Bearing 101°43'44.74", 4.19 Feet;
- Bearing 101°43'33.33", 31.98 Feet;
- Bearing 101°53'29.21", 53.8 Feet;
- Bearing 102°22'42.66", 53.8 Feet;
- Bearing 102°58'11.97", 90.4 Feet;
- Bearing 103°42'17.95", 90.4 Feet;
- Bearing 104°26'25.01", 90.4 Feet;
- Bearing 187°51'51.62", 1529.66 Feet;
- Bearing 281°19'58.86", 48.55 Feet;
- Bearing 281°19'57.96", 125.12 Feet;
- Bearing 281°19'53.55", 120.45 Feet;
- Bearing 281°19'55.59", 1040.73 Feet;

To the point originally listed.

Part 2: BEGINNING at the point of intersection between the Northeastern corner of Lot 8.A-1-98 and Old Liberty Rd. and continuing counterclockwise along the following bearings:

- Bearing 168°21'25.88", 250.16 Feet;
- Bearing 168°14'6.64", 250.16 Feet;
- Bearing 166°59'56.68", 115.05 Feet;
- Bearing 167°43'52.82", 115.06 Feet;
- Bearing 168°27'48.49", 115.05 Feet;
- Bearing 169°11'44.14", 115.06 Feet;

- Bearing 169°42'19.63", 50.44 Feet;
- Bearing 169°42'5.26", 11.19 Feet;
- Bearing 168°35'55.84", 43.81 Feet;
- Bearing 281°56'27.69", 359.91 Feet;
- Bearing 281°56'27.35", 124.55 Feet;
- Bearing 281°56'27.35", 143.5 Feet;
- Bearing 281°56'23.93", 77.89 Feet;
- Bearing 169°1'40.51", 162.3 Feet;
- Bearing 280°37'27.55", 1225.78 Feet;
- Bearing 7°9'3.11", 804.56 Feet;
- Bearing 98°45'7.43", 82.81 Feet;
- Bearing 98°45'7.93", 458.78 Feet;
- Bearing 98°45'8.27", 115.79 Feet;
- Bearing 98°45'7.37", 97.88 Feet;
- Bearing 98°45'9.05", 74.02 Feet;
- Bearing 98°45'7.52", 335.4 Feet;
- Bearing 5°5'26.04", 290.57 Feet;
- Bearing 98°13'58.78", 18.84 Feet;
- Bearing 98°13'58.26", 44.04 Feet;
- Bearing 98°15'50.37", 128.92 Feet;
- Bearing 98°26'53.15", 128.92 Feet;
- Bearing 98°26'53.61", 22.97 Feet;
- Bearing 133°24'2.51", 43.04 Feet;

To the starting point originally listed.

Part 3: BEGINNING at the Northeastern corner of Lot 9.-1-71 and continuing clockwise toward the Northeastern corner of parcel 9.-1-67:

- Bearing 100°27'6.25", 1000.43 Feet;
- Bearing 186°25'56.18", 693.68 Feet;
- Bearing 187°53'58.02", 242.83 Feet;
- Bearing 187°53'57.6", 754.72 Feet;
- Bearing 283°35'54.17", 332.7 Feet;
- Bearing 7°15'36.73", 729.37 Feet;
- Bearing 279°11'23.7", 104.67 Feet;
- Bearing 279°11'24.65", 151.22 Feet;
- Bearing 188°11'37.29", 532.74 Feet;
- Bearing 188°14'32.02", 0.59 Feet;
- Bearing 188°11'35.87", 28.02 Feet;
- Bearing 188°11'34.27", 84.05 Feet;
- Bearing 188°11'38.48", 65.63 Feet;
- Bearing 281°53'41.95", 37.93 Feet;
- Bearing 281°55'26.55", 16.33 Feet;
- Bearing 281°55'35.75", 10.36 Feet;
- Bearing 282°40'22.8", 82.01 Feet;
- Bearing 6°36'9.38", 175 Feet;

- Bearing 281°44'11.32", 175 Feet;
- Bearing 281°13'9.09", 130.33 Feet;
- Bearing 186°36'10.37", 173.82 Feet;
- Bearing 281°51'14.44", 7.21 Feet;
- Bearing 6°58'5.43", 660.51 Feet;
- Bearing 285°44'55.74", 110.39 Feet;
- Bearing 285°53'30.65", 145.33 Feet;
- Bearing 7°51'16.87", 144.47 Feet;
- Bearing 102°9'14.71", 270.39 Feet;
- Bearing 8°10'58.44", 65 Feet;
- Bearing 8°10'44.3", 65.01 Feet;
- Bearing 8°10'59.01", 75 Feet;
- Bearing 282°9'3.47", 150.01 Feet;
- Bearing 188°10'36.8", 70 Feet;
- Bearing 281°52'57.79", 122.44 Feet;

Thence across the right of way of Anawana Lake Rd at a Bearing of 280°9'23.3", 50.06 Feet;

- Bearing 187°17'27.51", 142.99 Feet;
- Bearing 187°52'47.15", 254.23 Feet;
- Bearing 187°7'26.26", 125.79 Feet;
- Bearing 186°5'51", 272.3 Feet;
- Bearing 186°5'47.9", 33.19 Feet;
- Bearing 183°2'9.8", 88.06 Feet;
- Bearing 174°11'58.07", 48.43 Feet;
- Bearing 282°37'21.02", 596.52 Feet;
- Bearing 280°56'45.18", 544.66 Feet;
- Bearing 280°11'27.98", 149.85 Feet;
- Bearing 280°6'57.11", 42.24 Feet;
- Bearing 5°8'30.83", 282.82 Feet;
- Bearing 6°47'30.97", 411.37 Feet;
- Bearing 6°47'30.53", 490.1 Feet;
- Bearing 6°24'24.24", 465.19 Feet;
- Bearing 101°39'16.03", 167.82 Feet;
- Bearing 101°39'15.77", 1169.41 Feet;
- Bearing 187°17'2.22", 1.91 Feet;
- Bearing 187°17'27.24", 94.78 Feet;

Thence across the right of way of Anawana Lake Rd at a Bearing of 98°50'23.88", 50.02 Feet;

- Bearing 98°46'34.65", 307.33 Feet;
- Bearing 10°34'48.57", 87.94 Feet;

To the starting point originally listed.

Part 4: BEGINNING at the Southeastern corner of Lot 9.-1-18.3 and continuing clockwise toward Gerber Rd:

- Bearing 239°21'31.94", 305.04 Feet;

Thence across the right of way of Gerber Rd at a Bearing of 243°13'21.7", 61.07 Feet;

- Bearing 274°25'20.82", 105.89 Feet;
- Bearing 274°40'32.33", 27.8 Feet;
- Bearing 274°40'31.14", 100 Feet;
- Bearing 8°33'30.08", 250 Feet;
- Bearing 94°40'27.28", 32.2 Feet;
- Bearing 95°11'35.27", 200.35 Feet;

Thence across the right of way of Gerber Rd at a Bearing of 120°19'38.2", 51.36 Feet;

- Bearing 9°14'40.8", 125.61 Feet;
- Bearing 9°11'44.31", 64.19 Feet;
- Bearing 9°44'25.84", 64.19 Feet;
- Bearing 9°22'0.75", 64.27 Feet;
- Bearing 9°46'29.87", 64.27 Feet;
- Bearing 61°41'6.4", 771.44 Feet;
- Bearing 152°42'5.56", 100 Feet;
- Bearing 152°42'7.03", 100 Feet;
- Bearing 152°42'6.43", 100 Feet;
- Bearing 243°29'6.2", 331.53 Feet;
- Bearing 241°49'8.76", 230.22 Feet;
- Bearing 239°55'31.2", 138.89 Feet;
- Bearing 186°59'11.49", 25 Feet;
- Bearing 186°59'11.93", 162.86 Feet;

To the starting point originally listed.

Part 5: BEGINNING at the Southeastern corner of Lot 15.-1-7 and continuing clockwise:

- Bearing 263°58'57.66", 97.8 Feet;
- Bearing 353°58'57.99", 150 Feet;
- Bearing 83°58'57.64", 95.97 Feet;
- Bearing 83°58'57.46", 102.66 Feet;
- Bearing 83°58'59.14", 101.37 Feet;
- Bearing 173°58'57.16", 115.62 Feet;
- Bearing 216°16'33.59", 46.47 Feet;
- Bearing 263°58'58.31", 68.74 Feet;
- Bearing 263°58'58.6", 102.19 Feet;

To the starting point originally listed.